

REGARDING MEASUREMENTS

A - THE GENERAL CONTRACTOR ELECTS TO GUARANTEE ALL OPENING DIMENSIONS SHOWN HEREIN BY CHECKING THE BOX AT THE LEFT AND SIGN THE LINE BELOW.

AUTHORIZED SIGNATURE OF CONTRACTOR

B - THE GENERAL CONTRACTOR ELECTS TO HAVE SUBCONTRACTOR FIELD MEASURE ALL OPENINGS AT THE TIME OPENINGS BECOME AVAILABLE HOWEVER, THIS MAY IMPACT DELIVERY DATES FOR LONGER LEAD-TIME ITEMS. PLEASE CHECK BOX AT LEFT AND SIGN THE LINE BELOW.

AUTHORIZED SIGNATURE OF CONTRACTOR

F Y F E B U I L D I N G

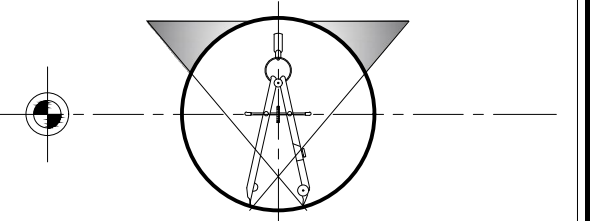
10 WEST ADAMS AVENUE
DETROIT, MI 49226

Aluminum Windows Shop Drawings

PHASE 1 (INTENDED TO START SPRING OF 2019)

PHASE 2 (INTENDED TO START SPRING OF 2024)

SABCAD, INC.



PROFESSIONAL DRAWINGS
700 E. MAPLE ROAD, SUITE 303
BIRMINGHAM, MI 48009
248.792.3656 F. 248.282.0595
info@sabcadinc.com

DISCLAIMER

SABCAD, INC will NOT be responsible for any errors, omissions, and/or work that occurs from the use of these drawings by other trades.

SUBCONTRACTOR:

MANUFACTURER:

EFCO CORPORATION
1000 COUNTY RD.
MONETT, MO 65708
417.235-3193

PROJECT:

FYFE BUILDING

10 WEST ADAMS AVENUE
DETROIT, MI 49226

MATERIAL

ABBREVIATIONS

	PLYWOOD	A/C = ACCESS CONTROLLED
	BATT INSULATION	A.F.F. = ABOVE FINISHED FLOOR
	GLAZED TILE	B.O.H. = BOTTOM OF HORIZONTAL
	MARBLE	CL = CENTER LINE
	ACOUSTICAL CEILING	DM. = DIMENSION
	FINISHED WOOD	D.L.O. = DAYLIGHT OPENING
	DIMENSION LUMBER	D.L. = DEAD LOAD (ANCHOR)
	FACE BRICK	D.O. = DOOR OPENING
	RIGID INSULATION	EL. = ELEVATION
	CUT STONE	F.S. = FRAME SIZE
	CONCRETE	F.F. = FINISH FLOOR
	CONCRETE BLOCK	G.C. = GENERAL CONTRACTOR
	STEEL IN SECTION	M.O. = MASONRY OPENING
	CAULKING	M.L. = MULLION LENGTH
	BACKER ROD	N.I.C. = NOT IN CONTRACT
		N.T.S. = NOT TO SCALE
		O.D. = OPENING DIMENSION
		O.F.D. = OVERALL FRAME DIMENSION
		REF. = REFERENCE
		R.O. = ROUGH OPENING
		T.O.STL. = TOP OF STEEL
		U.N.O. = UNLESS NOTED OTHERWISE
		V.I.F. = VERIFY IN FIELD
		OPP. = OPPOSITE
		SIM. = SIMILAR
		TYP. = TYPICAL
		W.P. = WORKING POINT

GENERAL NOTES

- SABCAD, INC WILL ASSUME NO RESPONSIBILITY FOR ERRORS RESULTING FROM THE USE OF THESE DRAWINGS BY OTHER TRADES.
- FINAL APPROVAL BY THE GENERAL CONTRACTOR CONSTITUTES ACCEPTANCE OF ALL DEVIATIONS TO THE CONTRACT DOCUMENTS MADE BY SABCAD, INC IN THESE DRAWINGS.
- THESE DRAWINGS REPRESENT SABCAD'S INTERPRETATION OF THE APPLICATION OF PRODUCTS TO THIS PROJECT IN FUNCTIONAL COMPLIANCE WITH THE ARCHITECTS DRAWINGS AND SPECIFICATIONS. IT IS IMPORTANT THAT THIS INTERPRETATION BE REVIEWED DIMENSIONALLY AND FUNCTIONALLY WITH RESPECT TO ACTUAL ARCHITECT INTENT, INTERFACING CONDITIONS, MATERIALS AND JOB SITE CONDITIONS.
- ALL DIMENSIONS SHALL BE FIELD VERIFIED AND/OR APPROVED BY THE GENERAL CONTRACTOR PRIOR TO GLASS ORDERING AND FABRICATION.
- ALL GLASS AND FINISHED MATERIAL MUST BE PROTECTED DURING WELDING OPERATIONS, FIREPROOFING OR ANY OTHER PROCESS THAT MAY BE HARMFUL TO THE APPEARANCE OR PERFORMANCE OF THE PROJECT MATERIALS.
- THE ROUGH OPENINGS PROVIDED MUST BE SQUARE AND WITHIN SPECIFIED BUILDING TOLERANCES.
- PERIMETER FASTENERS AND SUBSTRATE MUST BE CAPABLE OF WITHSTANDING REACTION FORCES IMPOSED BY WIND AND/OR DEAD LOAD. SABCAD, INC WILL NOT BE LIABLE FOR INSUFFICIENT ANCHORING AND/OR SUBSTRATE.
- LAWS AND BUILDING AND SAFETY CODES GOVERNING THE DESIGN AND USE OF GLAZING ENTRANCE, WINDOW AND CURTAIN WALL PRODUCTS VARY WIDELY. SABCAD, INC DOES NOT CONTROL THE SELECTION OF PRODUCT CONFIGURATIONS, OPERATING HARDWARE OR GLAZING MATERIALS AND ASSUMES NO RESPONSIBILITY.

D R A W I N G S H E E T I N D E X

SHEET #	DESCRIPTION	SHEET #	DESCRIPTION	SHEET #	DESCRIPTION
1.1	TITLE SHEET				
1.2	KEY ELEVATIONS				
1.3	KEY ELEVATIONS				
1.4	KEY ELEVATIONS				
2.1	ELEVATIONS				
2.2	ELEVATIONS				
2.3	ELEVATIONS				
2.4	ELEVATIONS				
2.5	ELEVATIONS				
2.6	ELEVATIONS				
2.7	ELEVATIONS				
2.8	ELEVATIONS				
2.9	ELEVATIONS				
2.10	ELEVATIONS				
2.11	ELEVATIONS				
3.1	DETAILS				
3.2	DETAILS				
3.3	DETAILS				
3.4	DETAILS				
3.5	DETAILS				
3.6	DETAILS				
3.7	DETAILS				
3.8	DETAILS				
3.9	DETAILS				
3.10	DETAILS				

GENERAL NOTES

- ALL DIMENSIONS TO BE VERIFIED IN FIELD.
- ALL ELEVATIONS ARE VIEWED FROM THE OUTSIDE UNLESS OTHERWISE INDICATED ON THE KEY PLAN.
- ALL DOORS ARE VIEWED FROM THE PULL SIDE UNLESS OTHERWISE INDICATED ON THE KEY PLAN.

DISCLAIMER

THESE SHOP DRAWINGS ARE AN INTERPRETATION OF THE CONTRACT DOCUMENTS. IT SHALL BE THE RESPONSIBILITY OF THE GENERAL CONTRACTOR / CONSTRUCTION MANAGER AND THE ARCHITECT TO REVIEW THESE DRAWINGS FOR COMPLIANCE WITH THE DESIGN INTENT AND CONTRACT DOCUMENTS. WHEN THESE DRAWINGS ARE RETURNED WITH "APPROVED", "APPROVED AS NOTED", OR "REVIEWED" STAMPED ON THEM, IT SHALL CONSTITUTE THE GENERAL CONTRACTOR / CONSTRUCTION MANAGER AND THE ARCHITECT AGREEMENT THAT THE SHOP DRAWINGS DO COMPLY WITH THE DESIGN INTENT AND THE CONTRACT DOCUMENTS AS NOTED WITH IN.

WHEN COPIES OF THESE SHOP DRAWINGS ARE GIVEN TO OTHER TRADES FOR COORDINATION PURPOSES, THOSE TRADES HAVE TO BE AWARE THAT ALL DIMENSIONS ON THE SHOP DRAWINGS ARE SUBJECT FOR FIELD VERIFICATION.

SHEET DESCRIPTION:

TITLE SHEET

DRAWING DATES RECORD

SCP # 18-106	
ISSUED:	11-05-2018
UPDATED:	12-13-2018
UPDATED:	01-18-2019
UPDATED:	01-25-2019

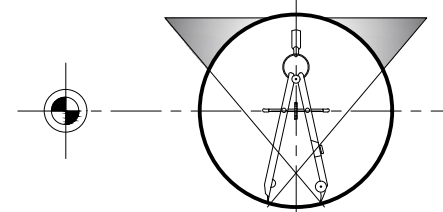
SCALE: NTS

SHEET #: 1.1

STEEL REINFORCEMENT SCHEDULE

PHASE 1

SABCAD, INC.



PROFESSIONAL DRAWINGS
700 E. MAPLE ROAD, SUITE 303
BIRMINGHAM, MI 48009
248.792.3656 F: 248.282.0595
info@sabcadinc.com

PROJECT:

FYFE BUILDING

10 WEST ADAMS AVENUE
DETROIT, MI 49226

GENERAL NOTES

- 1- ALL DIMENSIONS TO BE VERIFIED IN FIELD.
- 2- ALL ELEVATIONS ARE VIEWED FROM THE OUTSIDE UNLESS OTHERWISE INDICATED ON THE KEY PLAN.
- 3- ALL DOORS ARE VIEWED FROM THE PULL SIDE UNLESS OTHERWISE INDICATED ON THE KEY PLAN.

DISCLAIMER

THESE SHOP DRAWINGS ARE AN INTERPRETATION OF THE CONTRACT DOCUMENTS. IT SHALL BE THE RESPONSIBILITY OF THE GENERAL CONTRACTOR / CONSTRUCTION MANAGER AND THE ARCHITECT TO REVIEW THESE DRAWINGS FOR COMPLIANCE WITH THE DESIGN INTENT AND CONTRACT DOCUMENTS. WHEN THESE DRAWINGS ARE RETURNED WITH "APPROVED", "APPROVED AS NOTED", OR "REVISED" STAMPED ON THEM, IT SHALL CONSTITUTE THE GENERAL CONTRACTOR / CONSTRUCTION MANAGER AND THE ARCHITECT AGREEMENT THAT THE SHOP DRAWINGS DO COMPLY WITH THE DESIGN INTENT AND THE CONTRACT DOCUMENTS AS NOTED WITH IN.

WHEN COPIES OF THESE SHOP DRAWINGS ARE GIVEN TO OTHER TRADES FOR COORDINATION PURPOSES, THOSE TRADES HAVE TO BE AWARE THAT ALL DIMENSIONS ON THE SHOP DRAWINGS ARE SUBJECT FOR FIELD VERIFICATION.

SHEET DESCRIPTION:

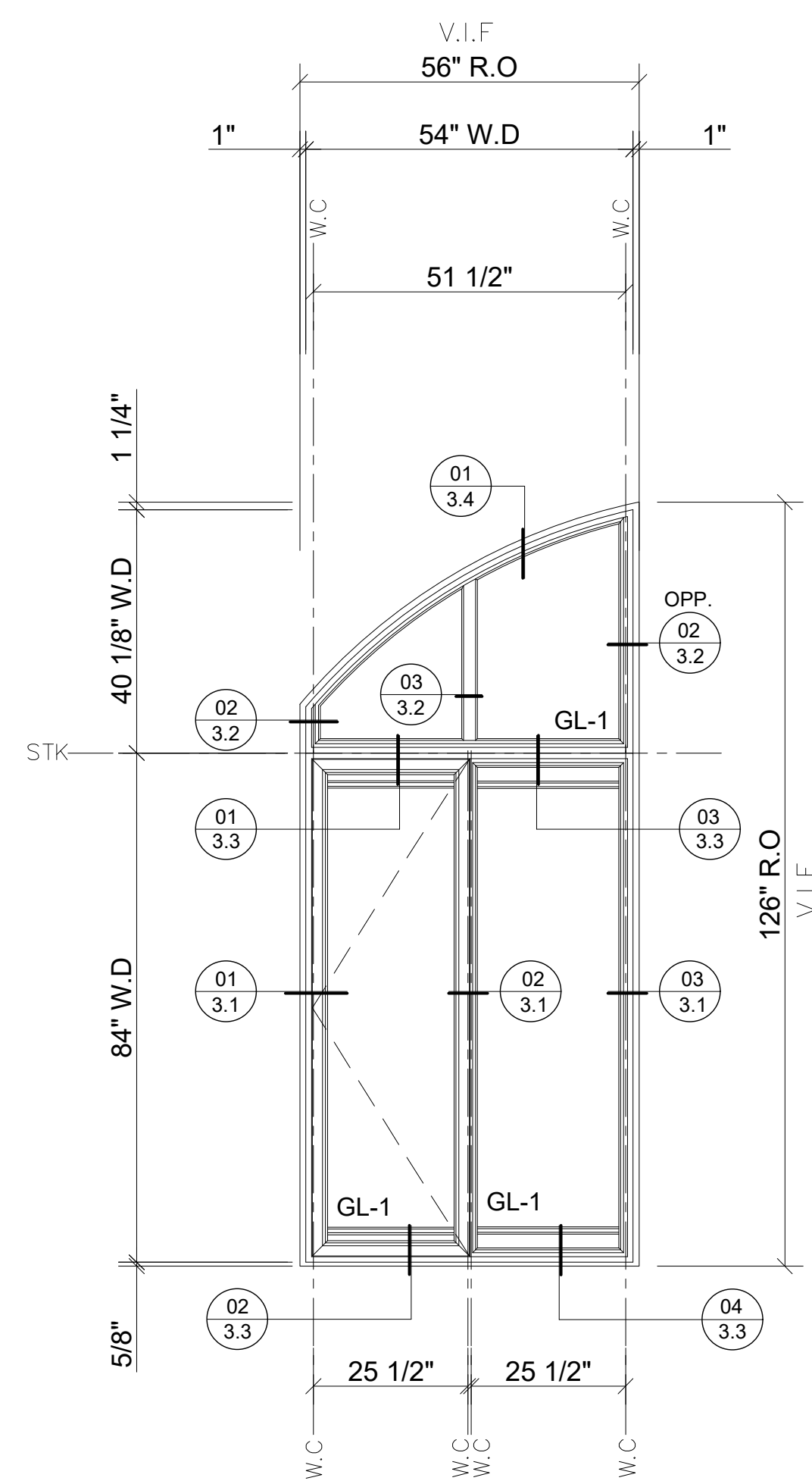
ELEVATIONS

DRAWING DATES RECORD

SCP # 18-106	
ISSUED:	11-05-2018
UPDATED:	12-13-2018
UPDATED:	01-18-2019

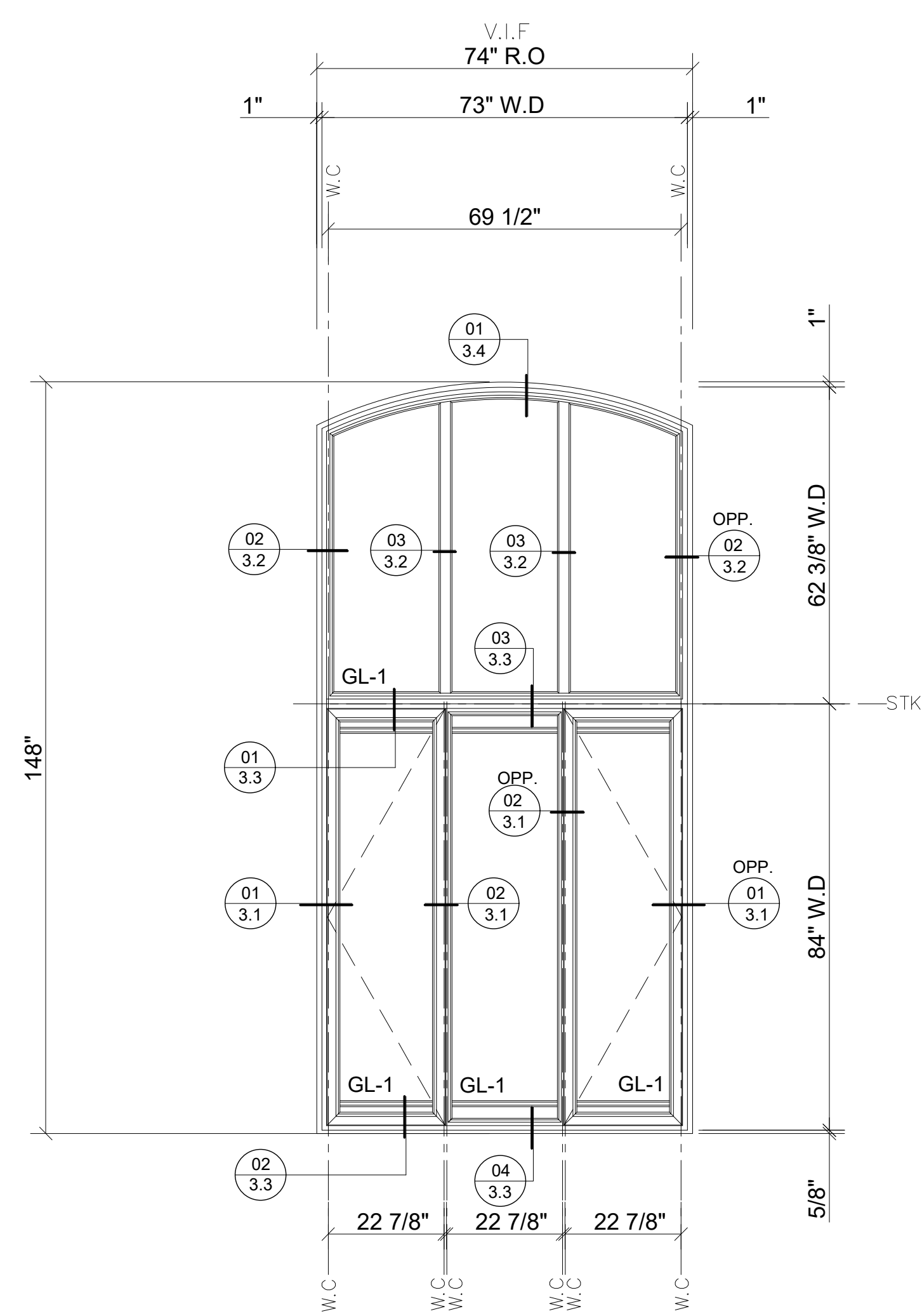
SCALE: 1/2" = 1'-0"

SHEET #: 2.1



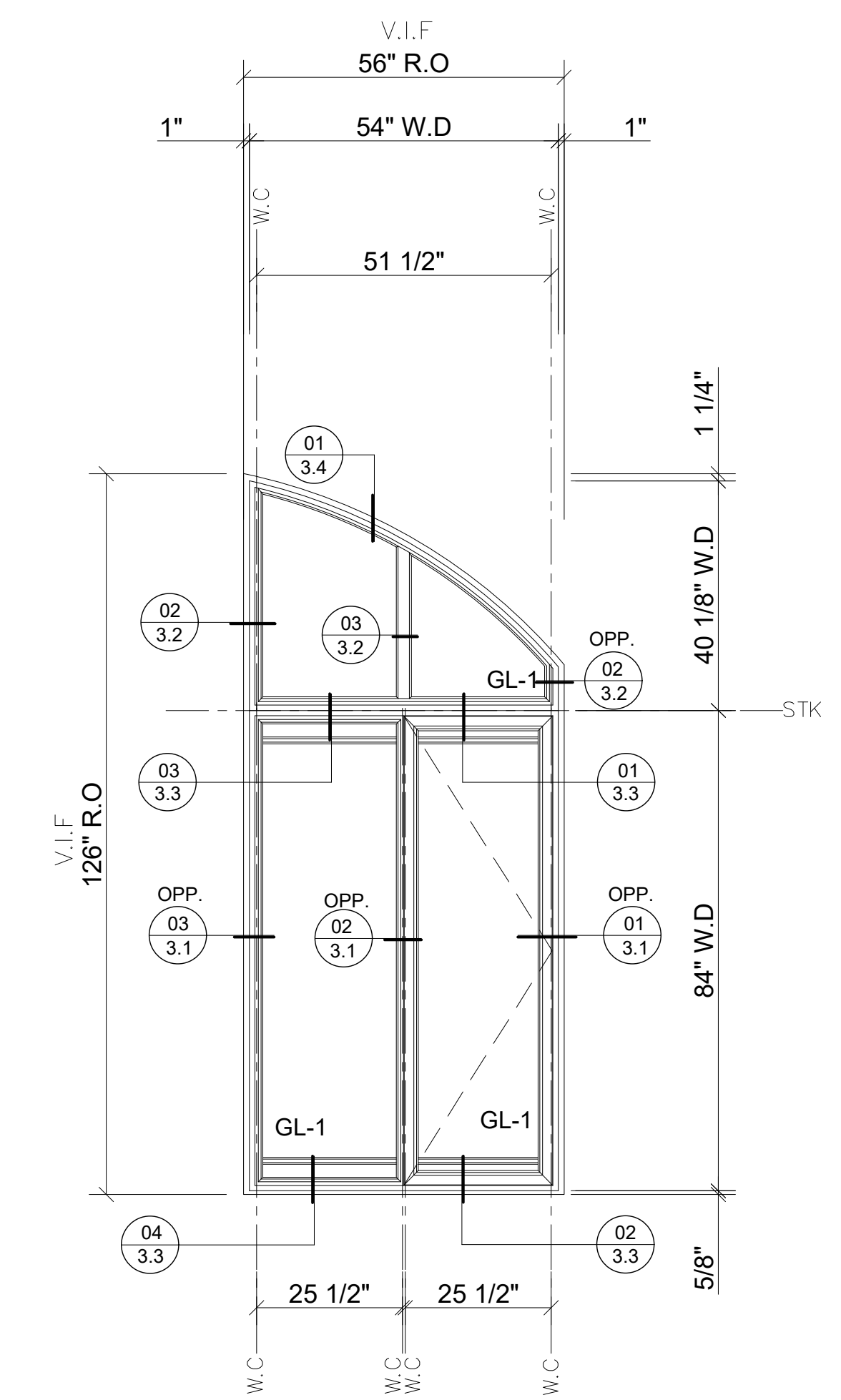
WINDOW "A" (Phase 1) QTY: 1

MANUFACTURER:	EFCO CORPORATION
WINDOW:	SERIES 325G PO CASEMENT / FIXED
FINISH:	MEDIUM BRONZE ANODIZED
GLASS:	GL-1: 1/4" CLEAR TEMP ES40 #2 + 1/2 AS + 1/4" CLEAR TEMP
SCREEN:	ALUMINUM GUN METAL
HARDWARE:	MULTI POINT LOCKS / BUTT HINGES / FRICTION ADJUSTER KEYED LIMIT STOP



WINDOW "B" (Phase 1) QTY: 1

MANUFACTURER:	EFCO CORPORATION
WINDOW:	SERIES 325G PO CASEMENT / FIXED
FINISH:	MEDIUM BRONZE ANODIZED
GLASS:	GL-1: 1/4" CLEAR TEMP ES40 #2 + 1/2 AS + 1/4" CLEAR TEMP
SCREEN:	ALUMINUM GUN METAL
HARDWARE:	MULTI POINT LOCKS / BUTT HINGES / FRICTION ADJUSTER KEYED LIMIT STOP

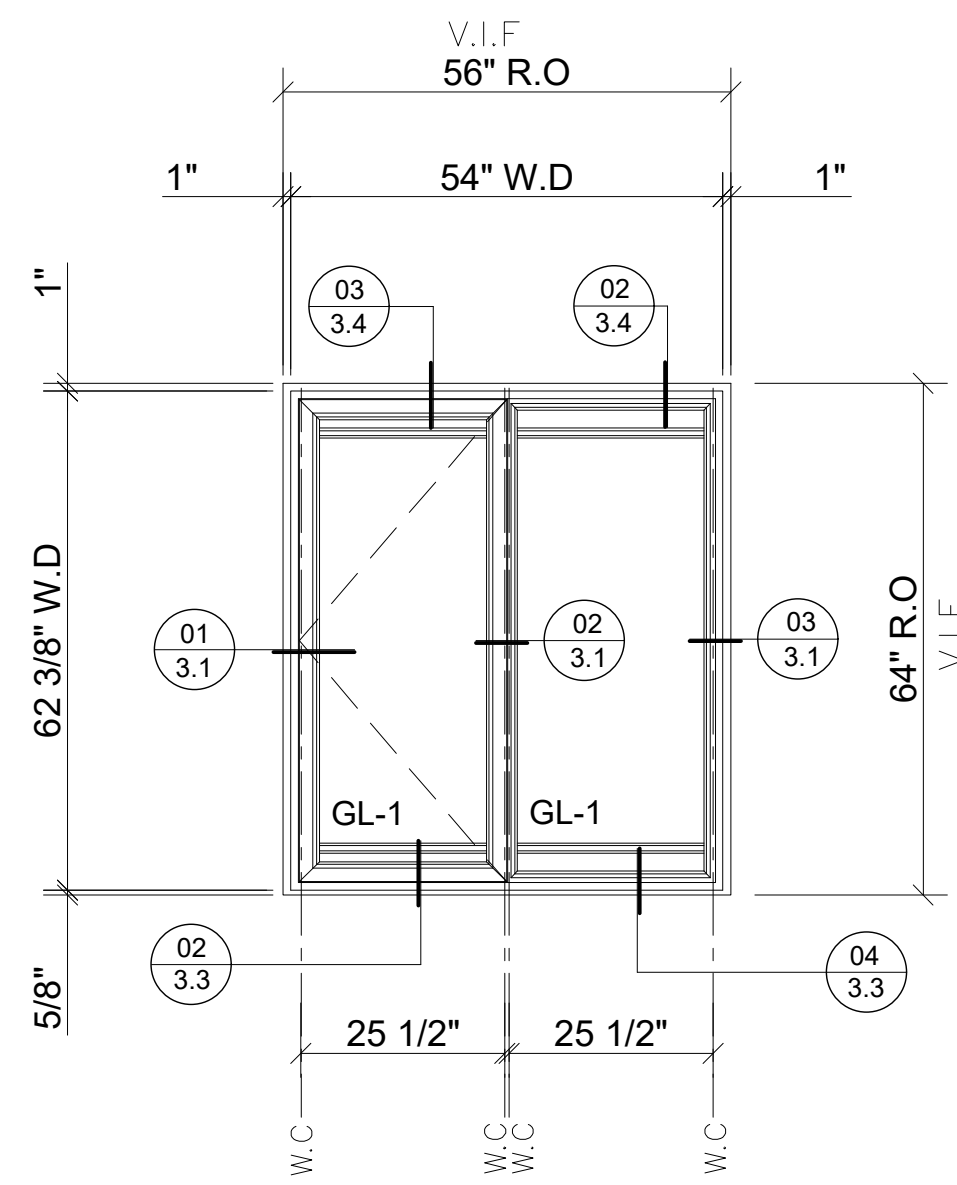


WINDOW "A"- OPP. (Phase 1) QTY: 1

MANUFACTURER:	EFCO CORPORATION
WINDOW:	SERIES 325G PO CASEMENT / FIXED
FINISH:	MEDIUM BRONZE ANODIZED
GLASS:	GL-1: 1/4" CLEAR TEMP ES40 #2 + 1/2 AS + 1/4" CLEAR TEMP
SCREEN:	ALUMINUM GUN METAL
HARDWARE:	MULTI POINT LOCKS / BUTT HINGES / FRICTION ADJUSTER KEYED LIMIT STOP

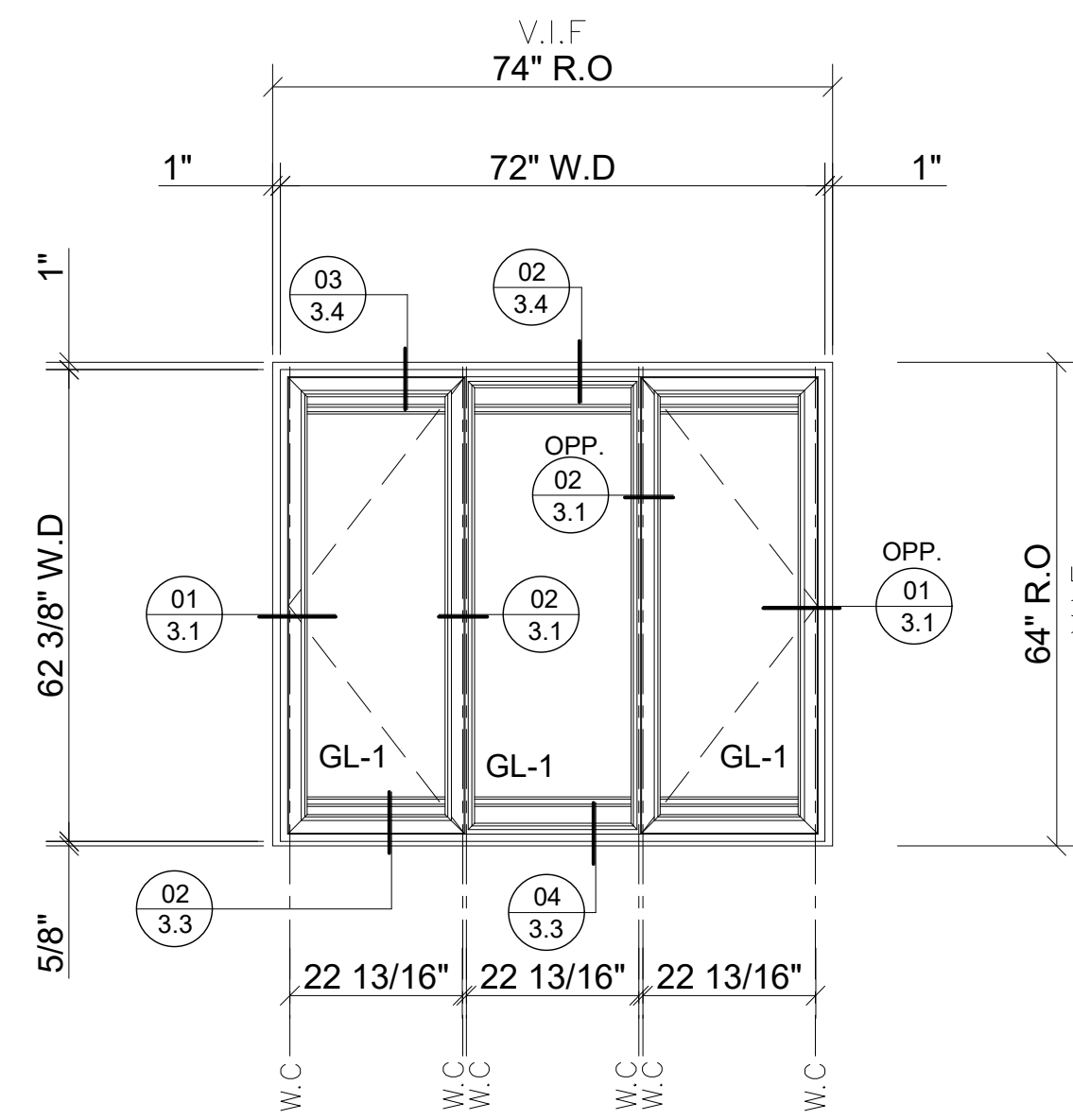
NOTE: ARCHED TOPS MAY REQUIRE TEMPLATES.

PHASE 1



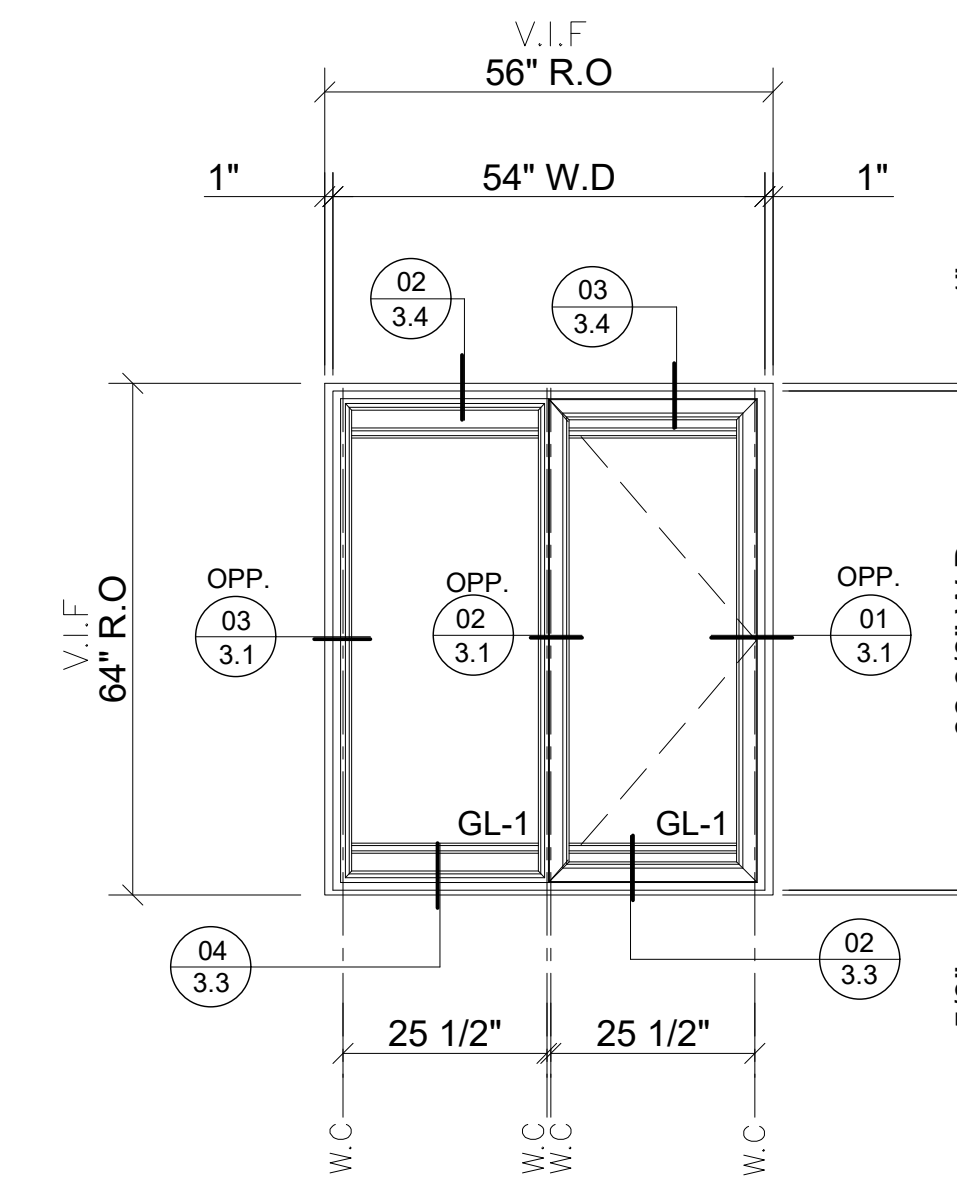
WINDOW "E" (Phase 1) QTY: 8

MANUFACTURER:	EFCO CORPORATION
WINDOW:	SERIES 325G PO CASEMENT / FIXED
FINISH:	MEDIUM BRONZE ANODIZED
GLASS:	GL-1: 1/4" CLEAR TEMP ES40 #2 + 1/2 AS + 1/4" CLEAR TEMP
SCREEN:	ALUMINUM GUN METAL
HARDWARE:	MULTI POINT LOCKS / BUTT HINGES / FRICTION ADJUSTER KEYED LIMIT STOP



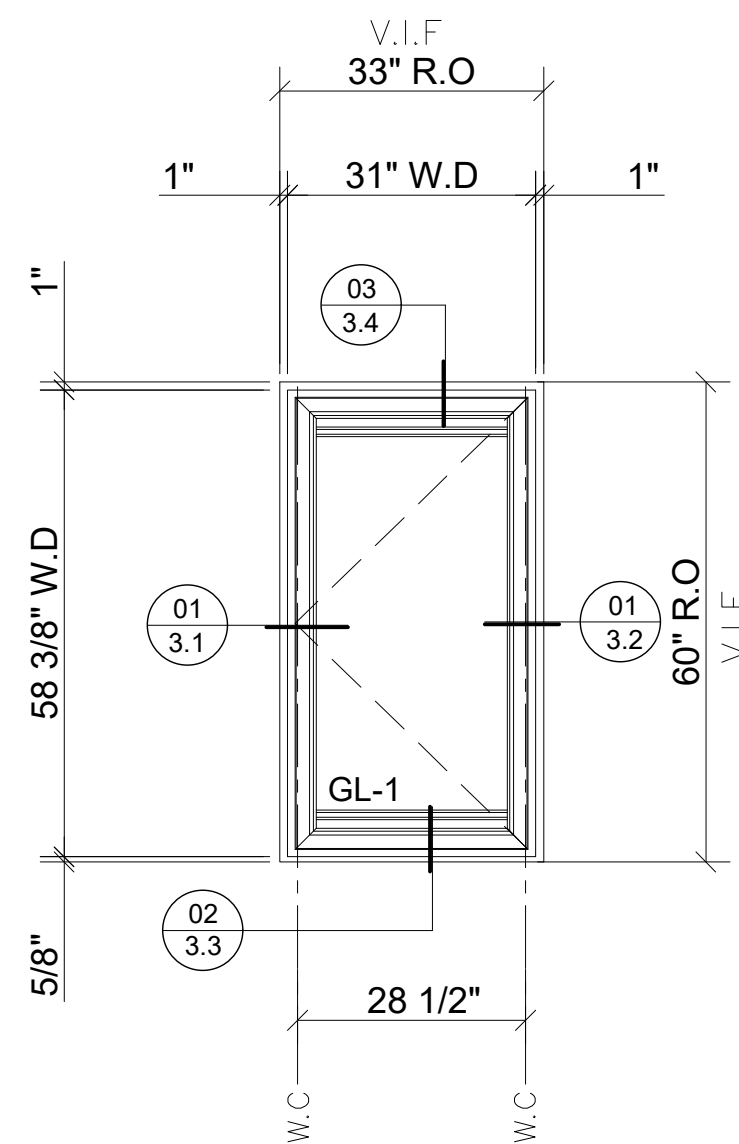
WINDOW "F" (Phase 1) QTY: 4

MANUFACTURER:	EFCO CORPORATION
WINDOW:	SERIES 325G PO CASEMENT / FIXED
FINISH:	MEDIUM BRONZE ANODIZED
GLASS:	GL-1: 1/4" CLEAR TEMP ES40 #2 + 1/2 AS + 1/4" CLEAR TEMP
SCREEN:	ALUMINUM GUN METAL
HARDWARE:	MULTI POINT LOCKS / BUTT HINGES / FRICTION ADJUSTER KEYED LIMIT STOP



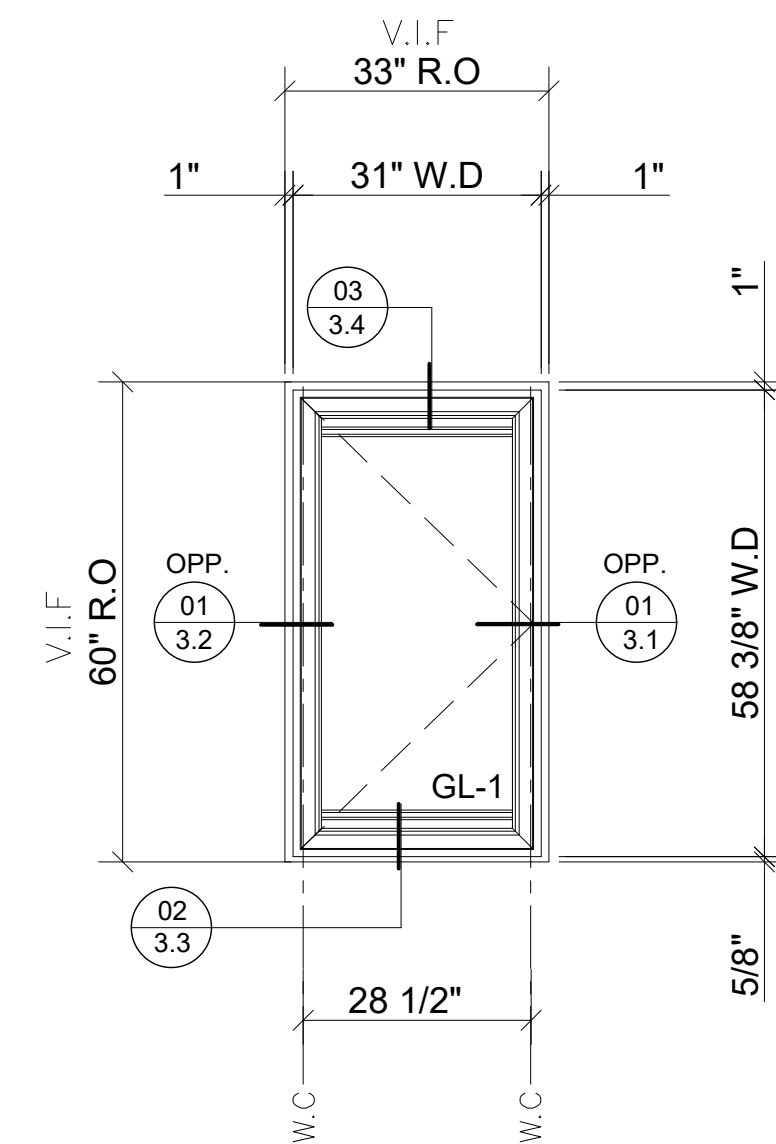
WINDOW "E"-OPP. (Phase 1) QTY: 8

MANUFACTURER:	EFCO CORPORATION
WINDOW:	SERIES 325G PO CASEMENT / FIXED
FINISH:	MEDIUM BRONZE ANODIZED
GLASS:	GL-1: 1/4" CLEAR TEMP ES40 #2 + 1/2 AS + 1/4" CLEAR TEMP
SCREEN:	ALUMINUM GUN METAL
HARDWARE:	MULTI POINT LOCKS / BUTT HINGES / FRICTION ADJUSTER KEYED LIMIT STOP



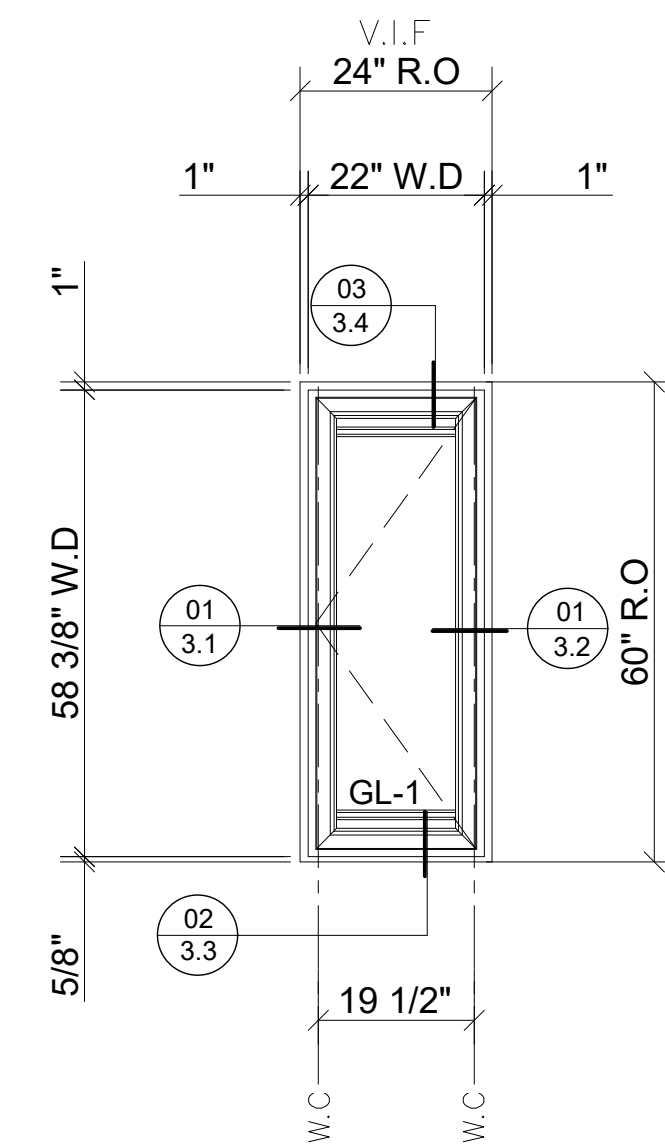
WINDOW "H" (Phase 1) QTY: 1

MANUFACTURER:	EFCO CORPORATION
WINDOW:	SERIES 325G PO CASEMENT
FINISH:	MEDIUM BRONZE ANODIZED
GLASS:	GL-1: 1/4" CLEAR TEMP ES40 #2 + 1/2 AS + 1/4" CLEAR TEMP
SCREEN:	ALUMINUM GUN METAL
HARDWARE:	MULTI POINT LOCKS / BUTT HINGES / FRICTION ADJUSTER KEYED LIMIT STOP



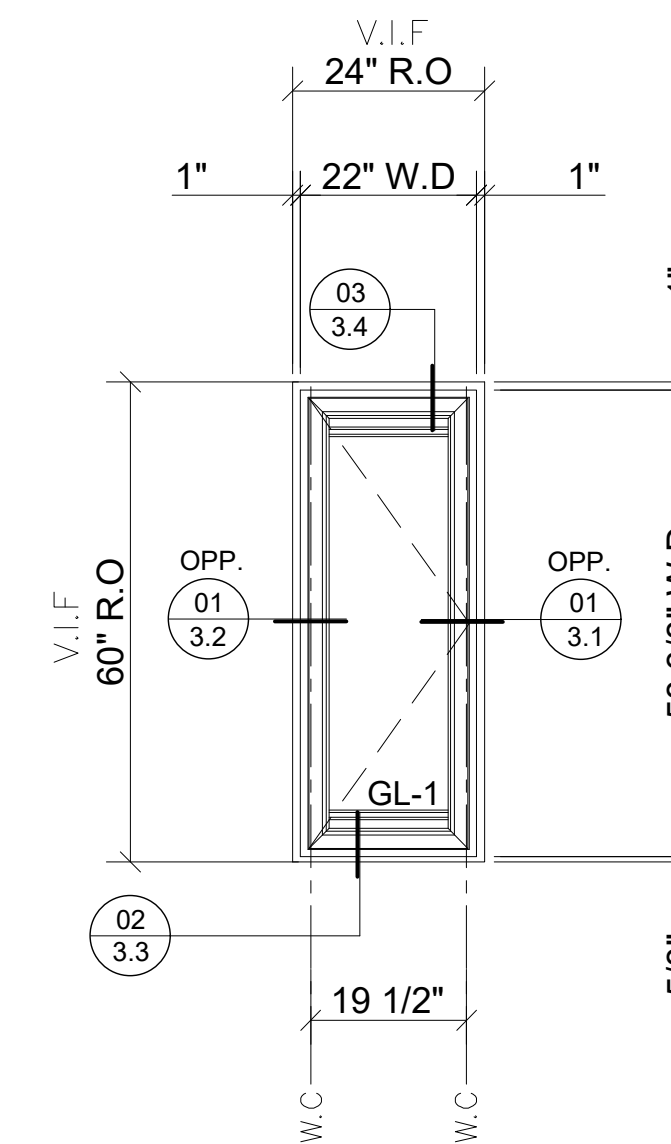
WINDOW "H"-OPP. (Phase 1) QTY: 1

MANUFACTURER:	EFCO CORPORATION
WINDOW:	SERIES 325G PO CASEMENT
FINISH:	MEDIUM BRONZE ANODIZED
GLASS:	GL-1: 1/4" CLEAR TEMP ES40 #2 + 1/2 AS + 1/4" CLEAR TEMP
SCREEN:	ALUMINUM GUN METAL
HARDWARE:	MULTI POINT LOCKS / BUTT HINGES / FRICTION ADJUSTER KEYED LIMIT STOP



WINDOW "G" (Phase 1) QTY: 4

MANUFACTURER:	EFCO CORPORATION
WINDOW:	SERIES 325G PO CASEMENT
FINISH:	MEDIUM BRONZE ANODIZED
GLASS:	GL-1: 1/4" CLEAR TEMP ES40 #2 + 1/2 AS + 1/4" CLEAR TEMP
SCREEN:	ALUMINUM GUN METAL
HARDWARE:	MULTI POINT LOCKS / BUTT HINGES / FRICTION ADJUSTER KEYED LIMIT STOP



WINDOW "G"-OPP. (Phase 1) QTY: 4

MANUFACTURER:	EFCO CORPORATION
WINDOW:	SERIES 325G PO CASEMENT
FINISH:	MEDIUM BRONZE ANODIZED
GLASS:	GL-1: 1/4" CLEAR TEMP ES40 #2 + 1/2 AS + 1/4" CLEAR TEMP
SCREEN:	ALUMINUM GUN METAL
HARDWARE:	MULTI POINT LOCKS / BUTT HINGES / FRICTION ADJUSTER KEYED LIMIT STOP

- GENERAL NOTES**
- 1- ALL DIMENSIONS TO BE VERIFIED IN FIELD.
 - 2- ALL ELEVATIONS ARE VIEWED FROM THE OUTSIDE UNLESS OTHERWISE INDICATED ON THE KEY PLAN.
 - 3- ALL DOORS ARE VIEWED FROM THE PULL SIDE UNLESS OTHERWISE INDICATED ON THE KEY PLAN.

DISCLAIMER

THESE SHOP DRAWINGS ARE AN INTERPRETATION OF THE CONTRACT DOCUMENTS. IT SHALL BE THE RESPONSIBILITY OF THE GENERAL CONTRACTOR / CONSTRUCTION MANAGER AND THE ARCHITECT TO REVIEW THESE DRAWINGS FOR COMPLIANCE WITH THE DESIGN INTENT AND CONTRACT DOCUMENTS. WHEN THESE DRAWINGS ARE RETURNED WITH "APPROVED", "APPROVED AS NOTED", OR "REVIEWED" STAMPED ON THEM, IT SHALL CONSTITUTE THE GENERAL CONTRACTOR / CONSTRUCTION MANAGER AND THE ARCHITECT AGREEMENT THAT THE SHOP DRAWINGS DO COMPLY WITH THE DESIGN INTENT AND THE CONTRACT DOCUMENTS AS NOTED WITH IN.

WHEN COPIES OF THESE SHOP DRAWINGS ARE GIVEN TO OTHER TRADES FOR COORDINATION PURPOSES, THOSE TRADES HAVE TO BE AWARE THAT ALL DIMENSIONS ON THE SHOP DRAWINGS ARE SUBJECT FOR FIELD VERIFICATION.

SHEET DESCRIPTION:
ELEVATIONS

DRAWING DATES RECORD

SCP # 18-106	
ISSUED:	11-05-2018
UPDATED:	12-13-2018

PHASE 1

NOTE: ARCHED TOPS MAY REQUIRE TEMPLATES.

SABCAD, INC.

PROFESSIONAL DRAWINGS
700 E. MAPLE ROAD, SUITE 303
BIRMINGHAM, MI 48009
248.792.3656 F: 248.282.0595
info@sabcadinc.com

PROJECT:
FYFE BUILDING
10 WEST ADAMS AVENUE
DETROIT, MI 49226

GENERAL NOTES
1- ALL DIMENSIONS TO BE VERIFIED IN FIELD.
2- ALL ELEVATIONS ARE VIEWED FROM THE OUTSIDE UNLESS OTHER WISE INDICATED ON THE KEY PLAN.
3- ALL DOORS ARE VIEWED FROM THE PULL SIDE UNLESS OTHER WISE INDICATED ON THE KEY PLAN.

DISCLAIMER
THESE SHOP DRAWINGS ARE AN INTERPRETATION OF THE CONTRACT DOCUMENTS. IT SHALL BE THE RESPONSIBILITY OF THE GENERAL CONTRACTOR / CONSTRUCTION MANAGER AND THE ARCHITECT TO REVIEW THESE DRAWINGS FOR COMPLIANCE WITH THE DESIGN INTENT AND CONTRACT DOCUMENTS. WHEN THESE DRAWINGS ARE RETURNED WITH "APPROVED", "APPROVED AS NOTED", OR "REVISED" STAMPED ON THEM, IT SHALL CONSTITUTE THE GENERAL CONTRACTOR / CONSTRUCTION MANAGER AND THE ARCHITECT AGREEMENT THAT THE SHOP DRAWINGS DO COMPLY WITH THE DESIGN INTENT AND THE CONTRACT DOCUMENTS AS NOTED WITH IN.

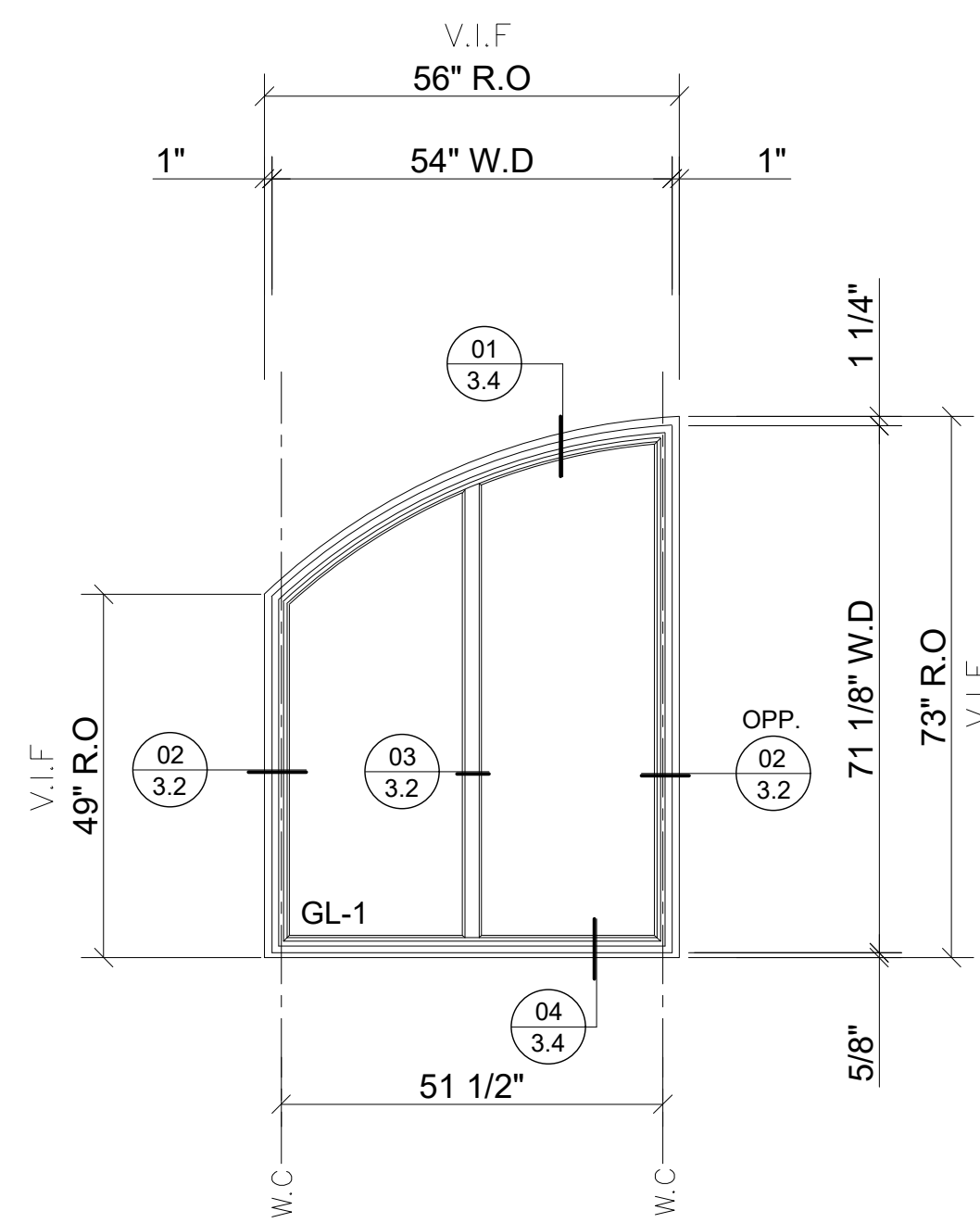
SHEET DESCRIPTION:
ELEVATIONS

DRAWING DATES RECORD

SCP # 18-106	
ISSUED:	11-05-2018
UPDATED:	12-13-2018

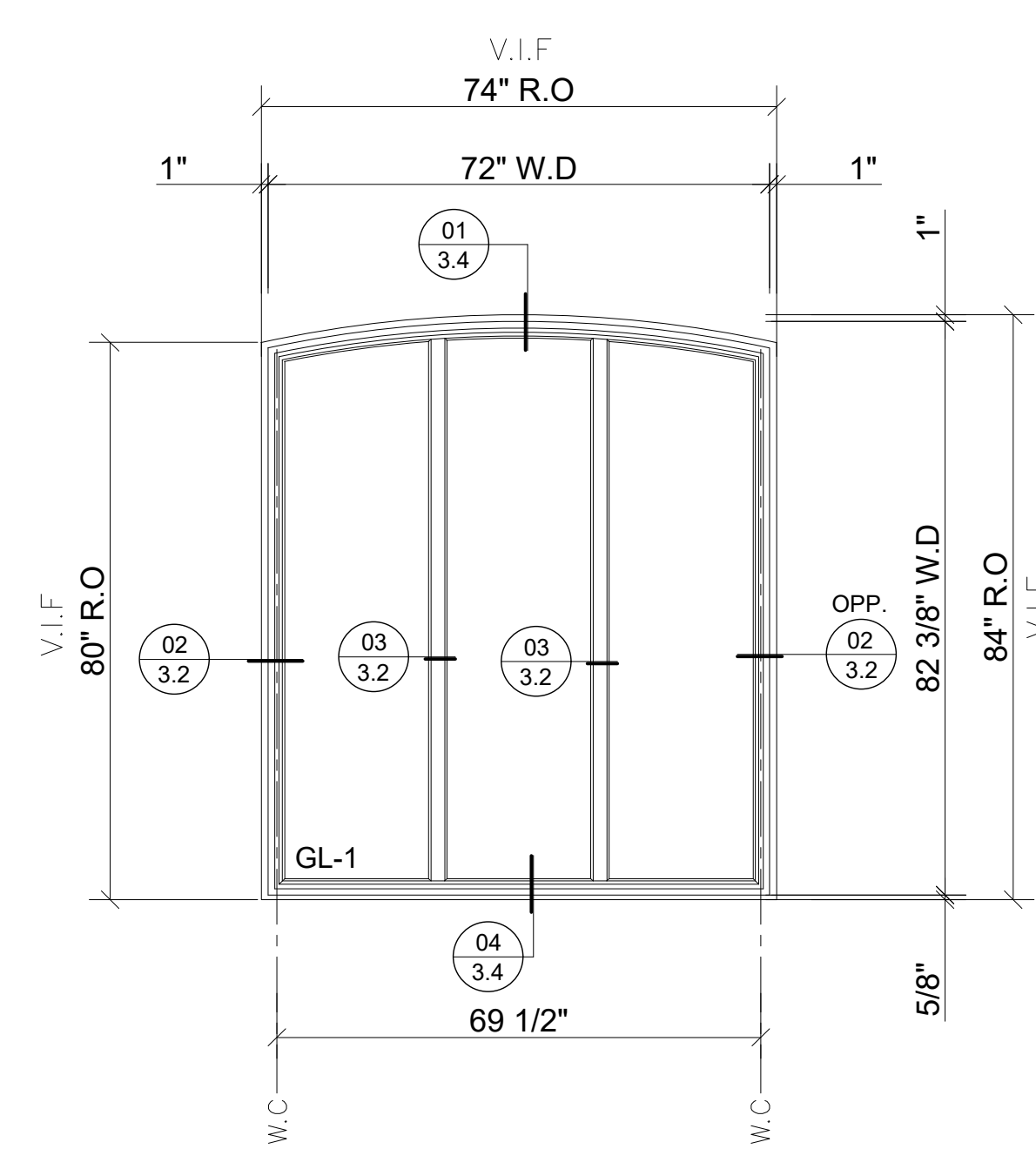
SCALE: 1/2" = 1'-0"

SHEET #: 2.4



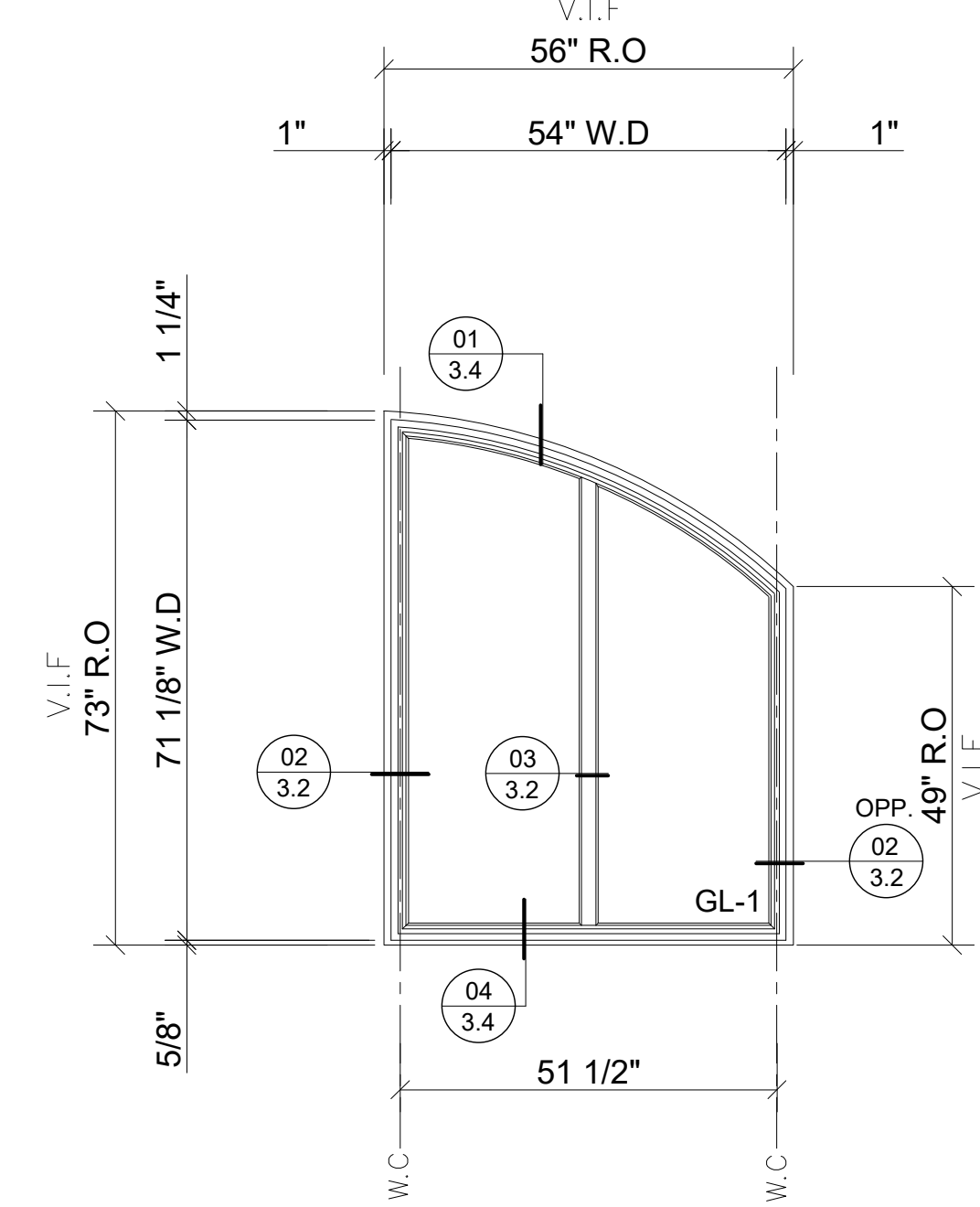
WINDOW "I" (Phase 1) QTY: 1

MANUFACTURER:	EFCO CORPORATION
WINDOW:	SERIES 325G FIXED
FINISH:	MEDIUM BRONZE ANODIZED
GLASS:	GL-1: 1/4" CLEAR TEMP ES40 #2 + 1/2 AS + 1/4" CLEAR TEMP



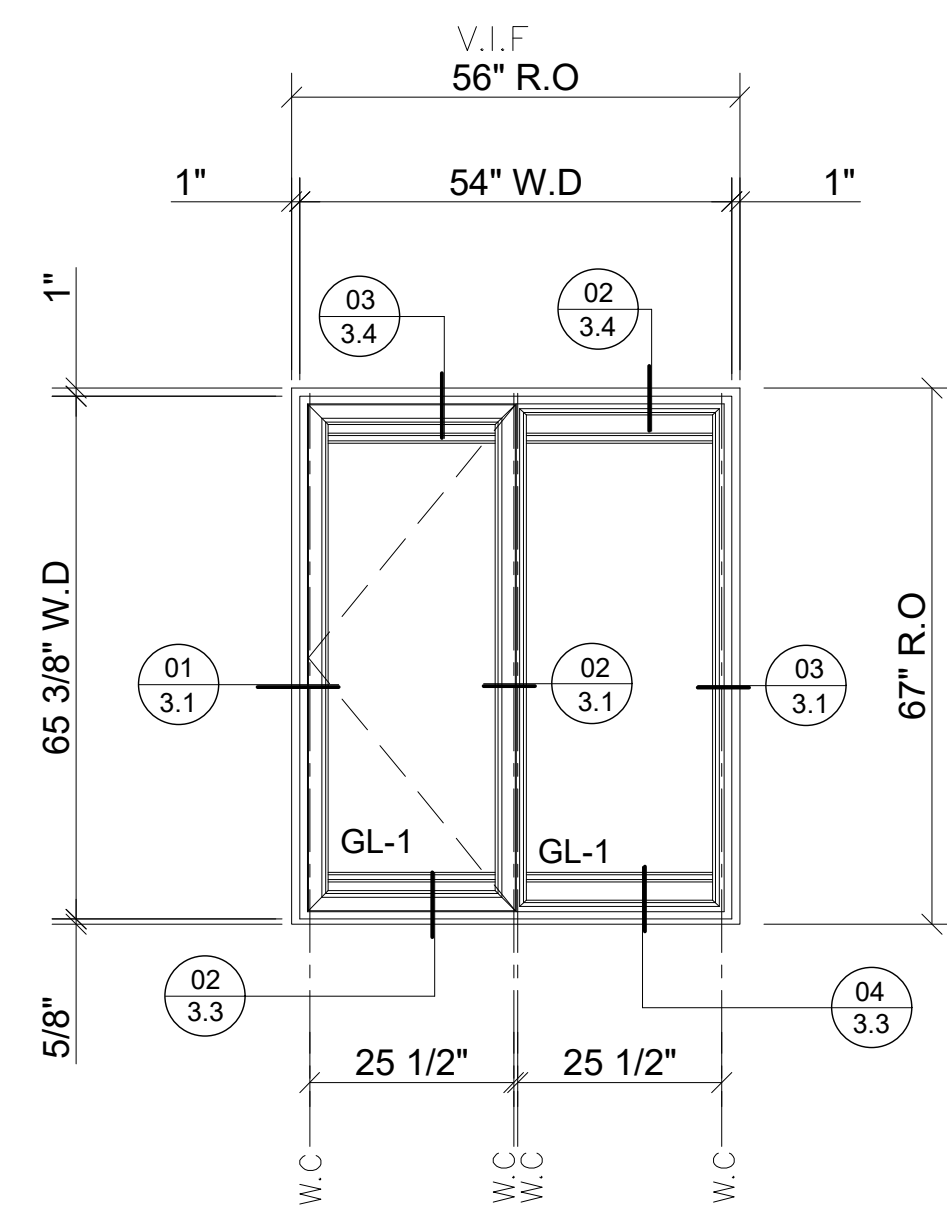
WINDOW "J" (Phase 1) QTY: 1

MANUFACTURER:	EFCO CORPORATION
WINDOW:	SERIES 325G FIXED
FINISH:	MEDIUM BRONZE ANODIZED
GLASS:	GL-1: 1/4" CLEAR TEMP ES40 #2 + 1/2 AS + 1/4" CLEAR TEMP



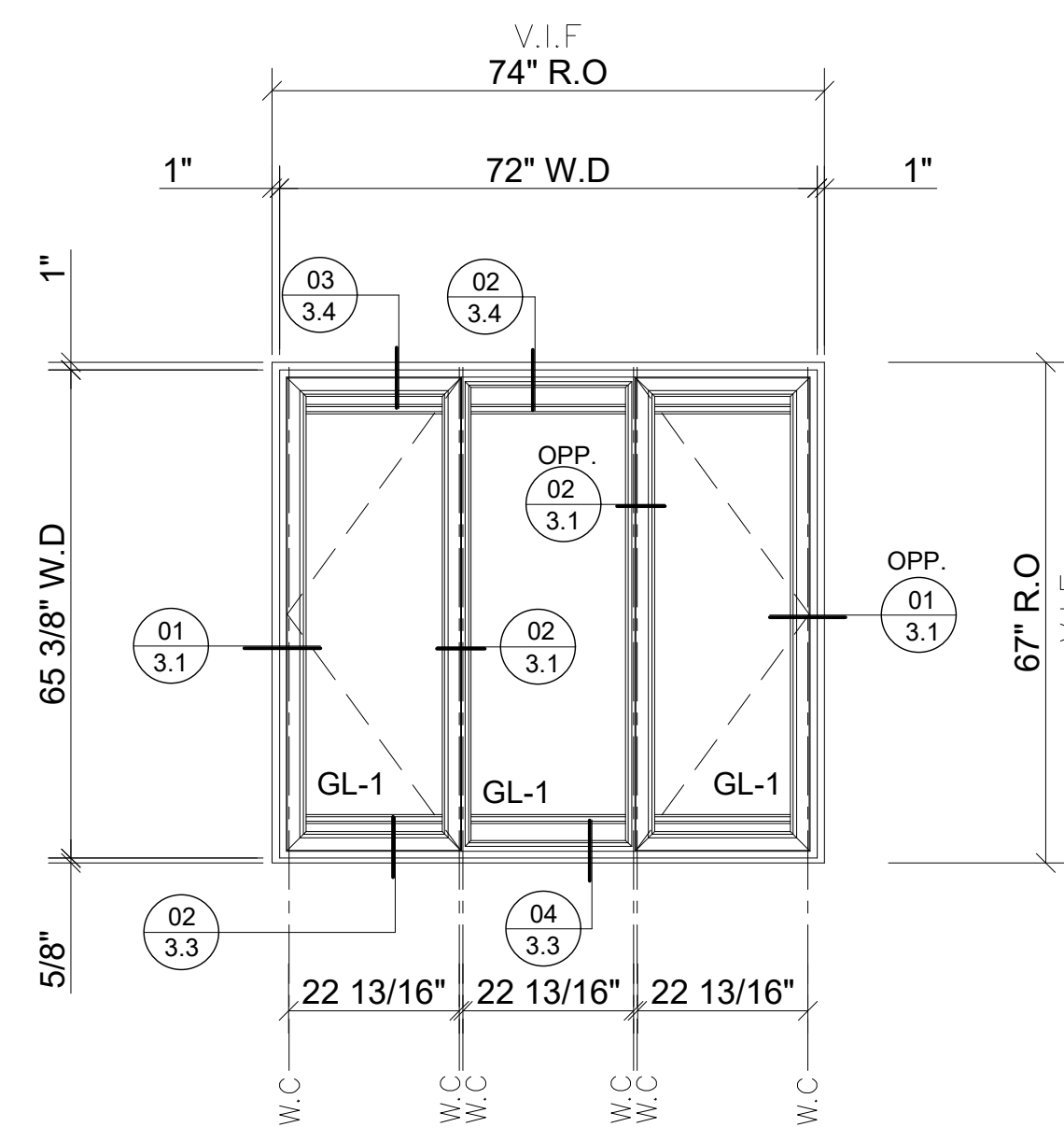
WINDOW "I"-OPP (Phase 1) QTY: 1

MANUFACTURER:	EFCO CORPORATION
WINDOW:	SERIES 325G FIXED
FINISH:	MEDIUM BRONZE ANODIZED
GLASS:	GL-1: 1/4" CLEAR TEMP ES40 #2 + 1/2 AS + 1/4" CLEAR TEMP



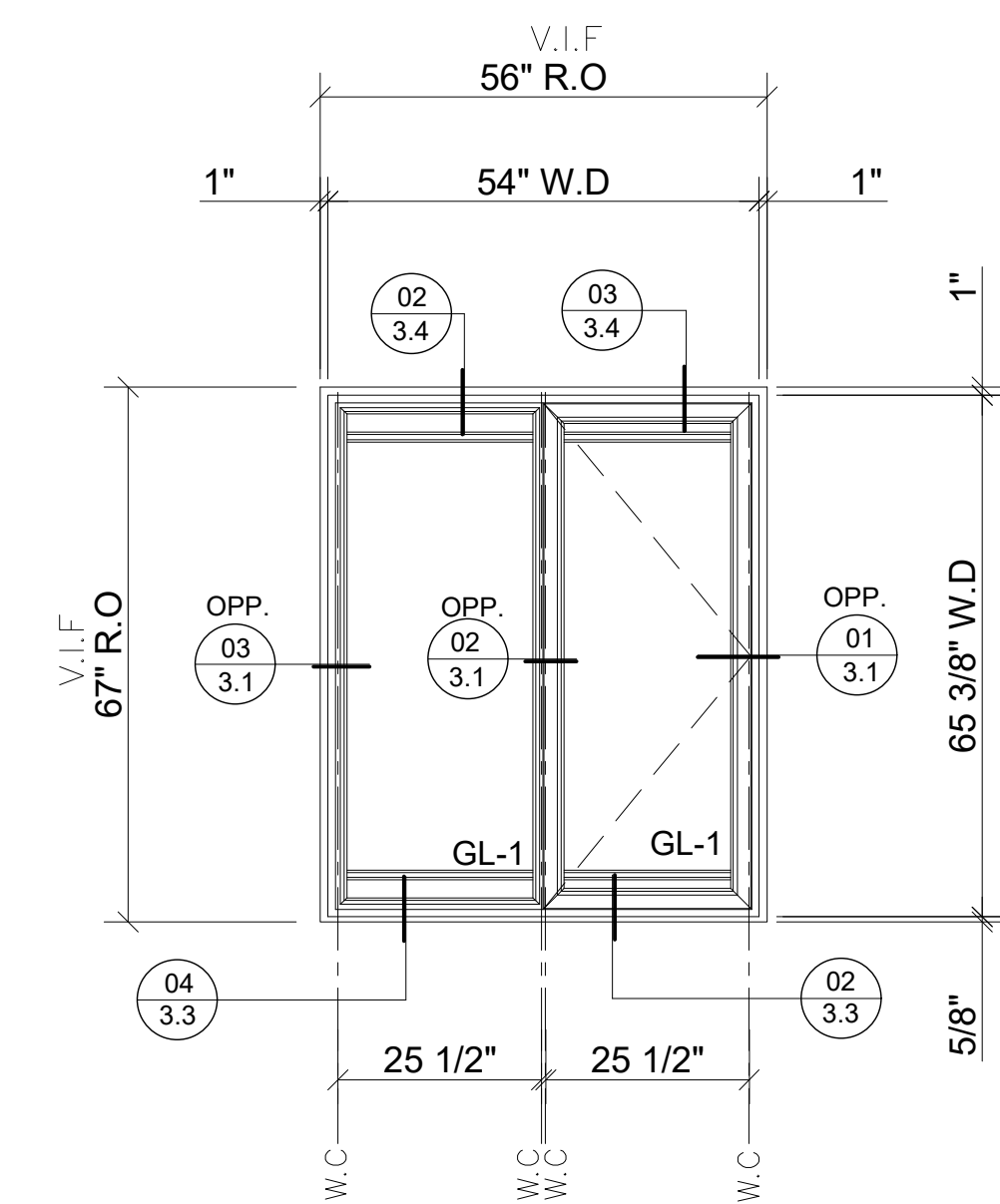
WINDOW "K" (Phase 1) QTY: 1

MANUFACTURER:	EFCO CORPORATION
WINDOW:	SERIES 325G PO CASEMENT / FIXED
FINISH:	MEDIUM BRONZE ANODIZED
GLASS:	GL-1: 1/4" CLEAR TEMP ES40 #2 + 1/2 AS + 1/4" CLEAR TEMP
SCREEN:	ALUMINUM GUN METAL
HARDWARE:	MULTI POINT LOCKS / BUTT HINGES / FRICTION ADJUSTER KEYED LIMIT STOP



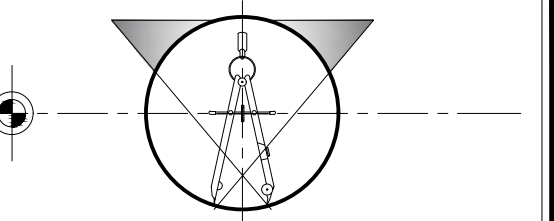
WINDOW "L" (Phase 1) QTY: 1

MANUFACTURER:	EFCO CORPORATION
WINDOW:	SERIES 325G PO CASEMENT / FIXED
FINISH:	MEDIUM BRONZE ANODIZED
GLASS:	GL-1: 1/4" CLEAR TEMP ES40 #2 + 1/2 AS + 1/4" CLEAR TEMP
SCREEN:	ALUMINUM GUN METAL
HARDWARE:	MULTI POINT LOCKS / BUTT HINGES / FRICTION ADJUSTER KEYED LIMIT STOP



WINDOW "K"-OPP (Phase 1) QTY: 1

MANUFACTURER:	EFCO CORPORATION
WINDOW:	SERIES 325G PO CASEMENT / FIXED
FINISH:	MEDIUM BRONZE ANODIZED
GLASS:	GL-1: 1/4" CLEAR TEMP ES40 #2 + 1/2 AS + 1/4" CLEAR TEMP
SCREEN:	ALUMINUM GUN METAL
HARDWARE:	MULTI POINT LOCKS / BUTT HINGES / FRICTION ADJUSTER KEYED LIMIT STOP



PROJECT:

FYFE BUILDING

10 WEST ADAMS AVENUE
 DETROIT, MI 49226

GENERAL NOTES

- 1- ALL DIMENSIONS TO BE VERIFIED IN FIELD.
- 2- ALL ELEVATIONS ARE VIEWED FROM THE OUTSIDE UNLESS OTHERWISE INDICATED ON THE KEY PLAN.
- 3- ALL DOORS ARE VIEWED FROM THE PULL SIDE UNLESS OTHERWISE INDICATED ON THE KEY PLAN.

DISCLAIMER

THESE SHOP DRAWINGS ARE AN INTERPRETATION OF THE CONTRACT DOCUMENTS. IT SHALL BE THE RESPONSIBILITY OF THE GENERAL CONTRACTOR / CONSTRUCTION MANAGER AND THE ARCHITECT TO REVIEW THESE DRAWINGS FOR COMPLIANCE WITH THE DESIGN INTENT AND CONTRACT DOCUMENTS. WHEN THESE DRAWINGS ARE RETURNED WITH "APPROVED", "APPROVED AS NOTED", OR "REVIEWED" STAMPED ON THEM, IT SHALL CONSTITUTE THE GENERAL CONTRACTOR / CONSTRUCTION MANAGER AND THE ARCHITECT AGREEMENT THAT THE SHOP DRAWINGS DO COMPLY WITH THE DESIGN INTENT AND THE CONTRACT DOCUMENTS AS NOTED WITH IN.

WHEN COPIES OF THESE SHOP DRAWINGS ARE GIVEN TO OTHER TRADES FOR COORDINATION PURPOSES, THOSE TRADES HAVE TO BE AWARE THAT ALL DIMENSIONS ON THE SHOP DRAWINGS ARE SUBJECT FOR FIELD VERIFICATION.

SHEET DESCRIPTION:

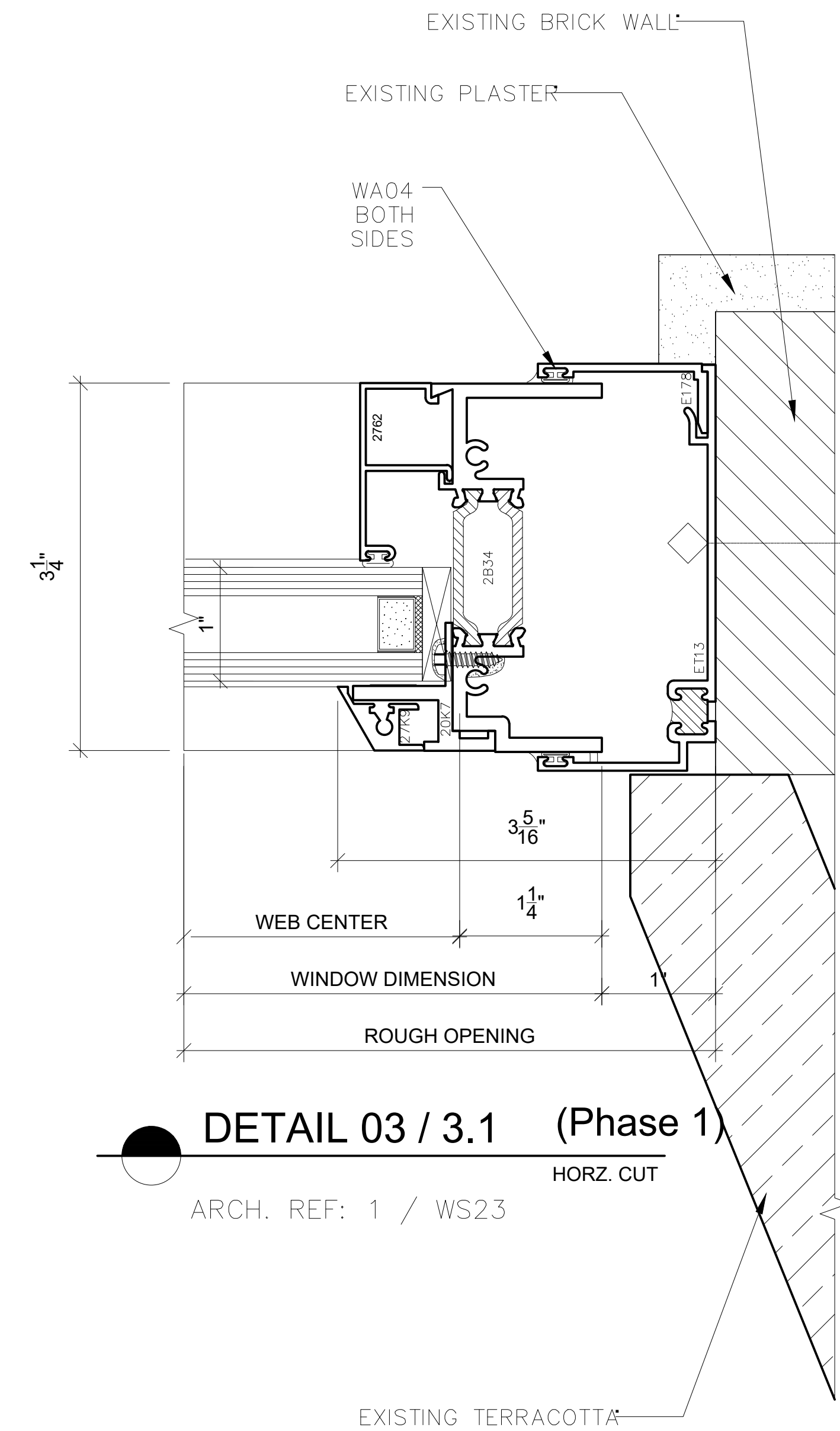
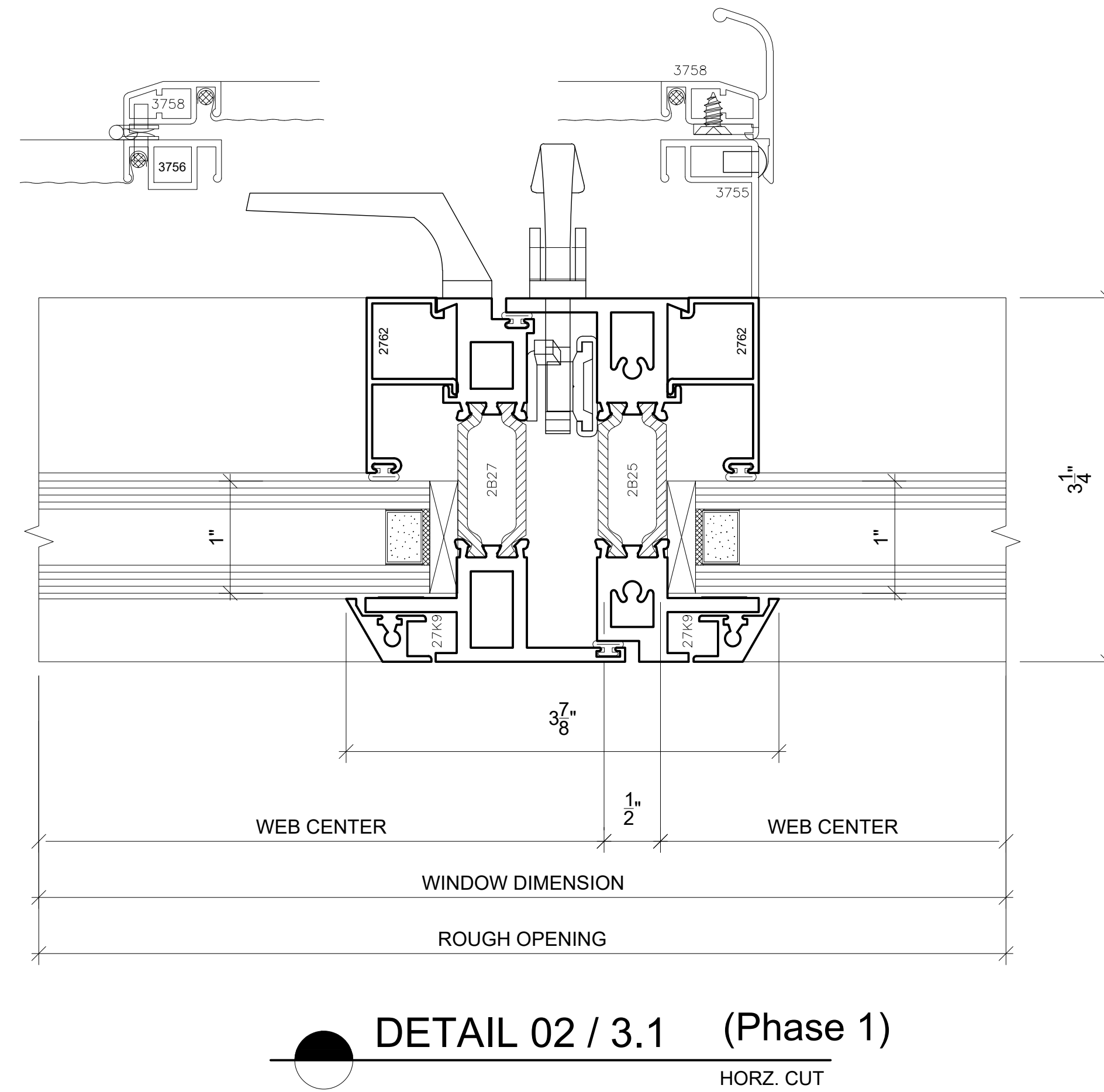
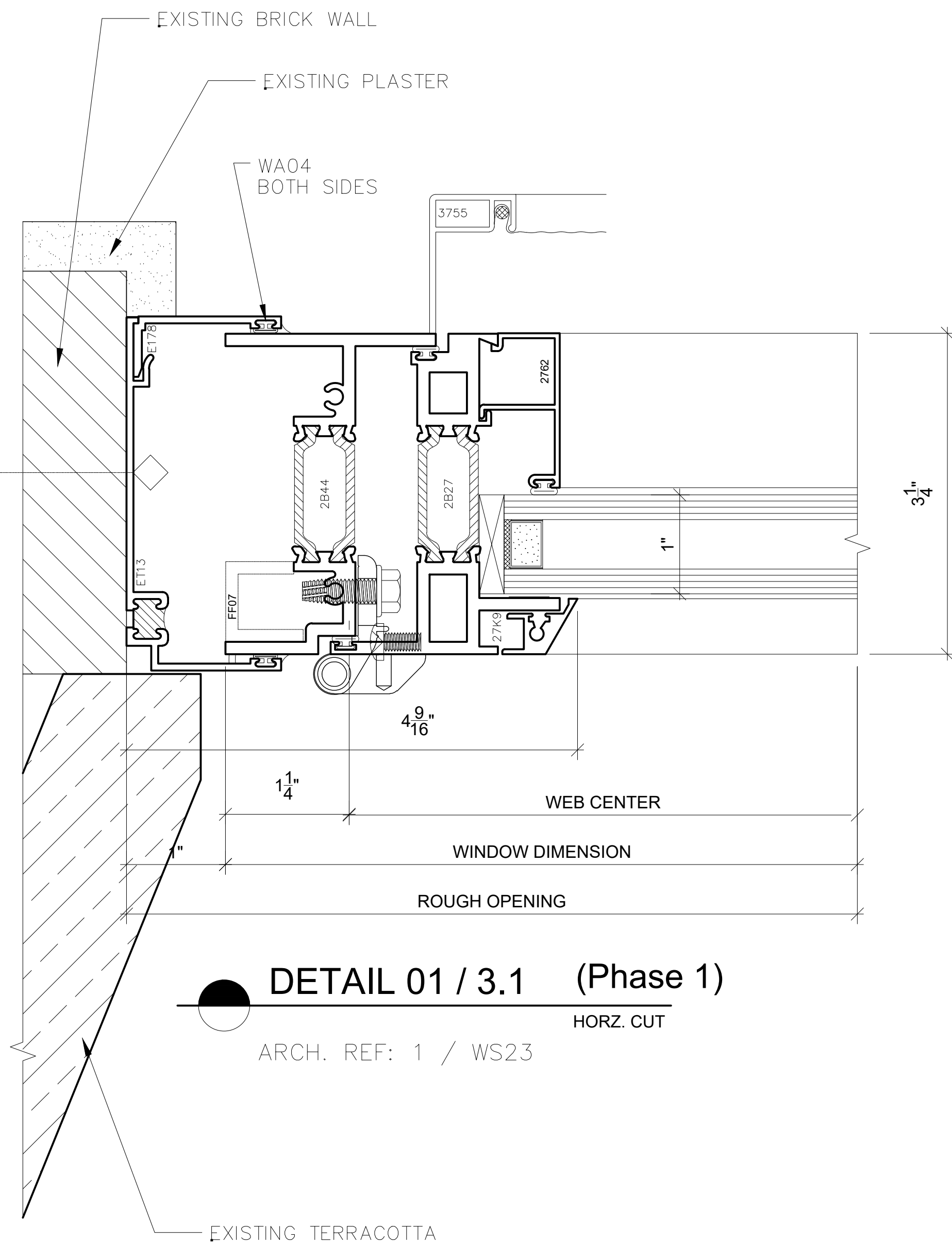
DETAILS

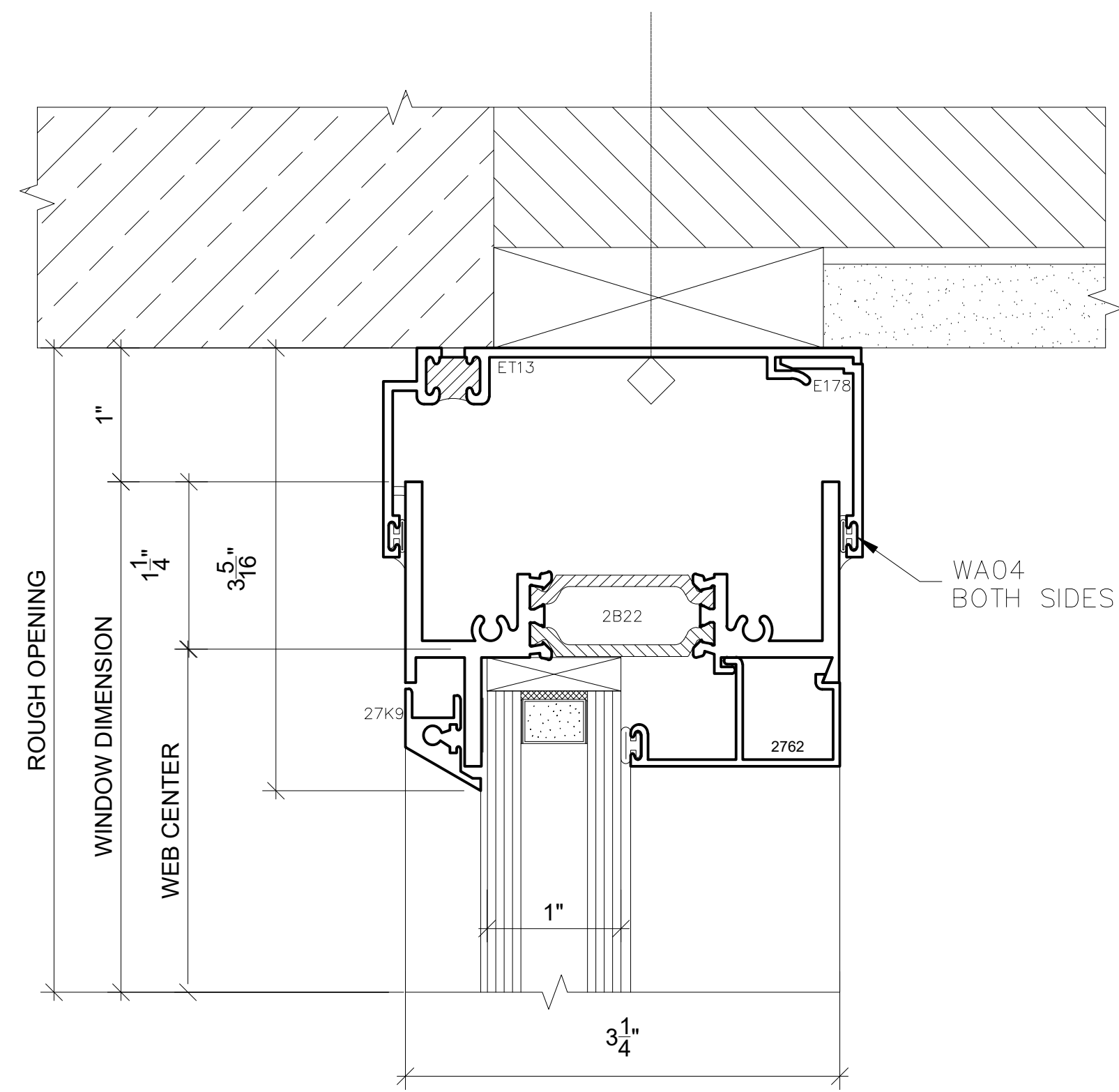
DRAWING DATES RECORD

SCP # 18-106	
ISSUED:	11-05-2018
UPDATE:	01-18-2019

SCALE: FULL

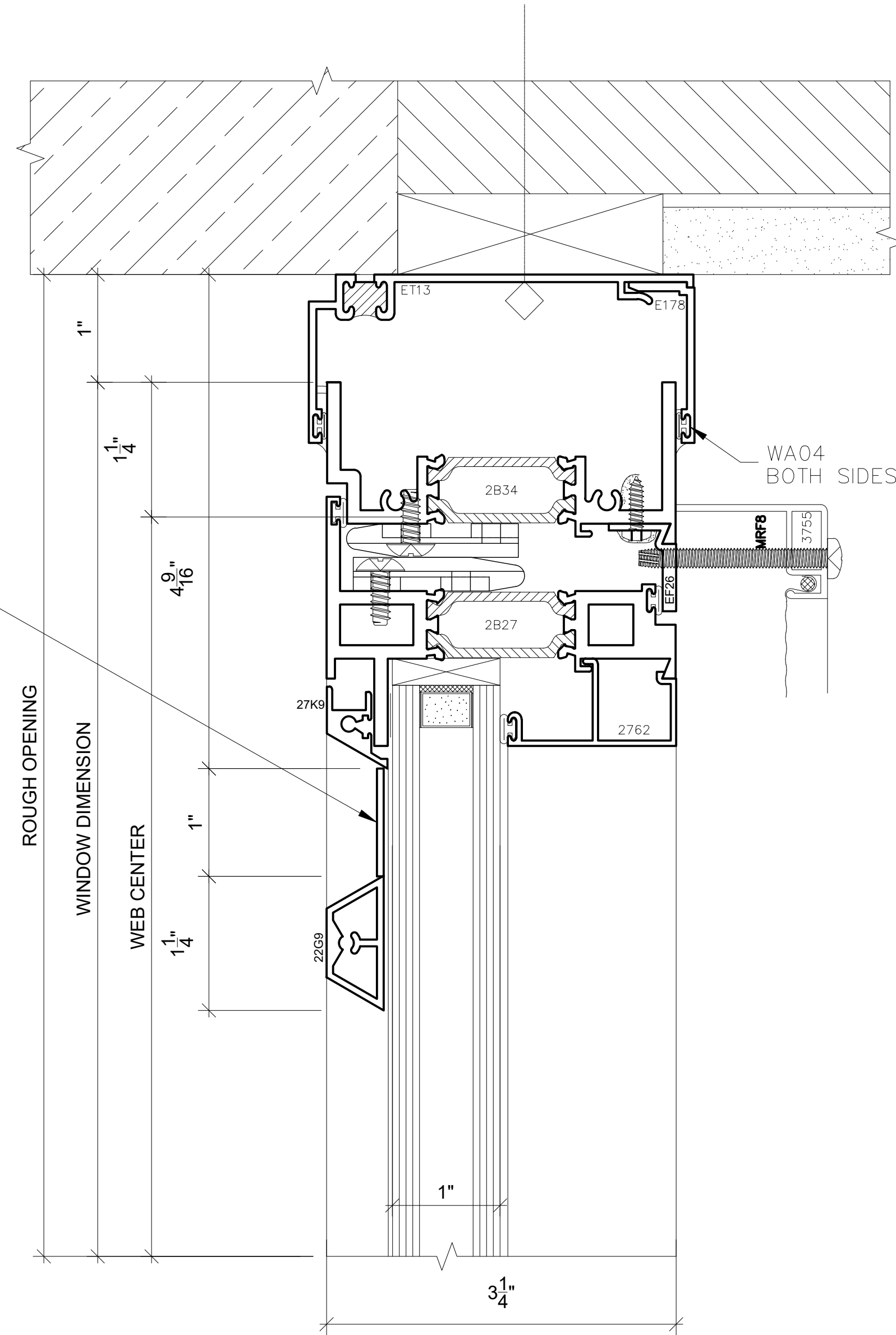
SHEET #: **3.1**





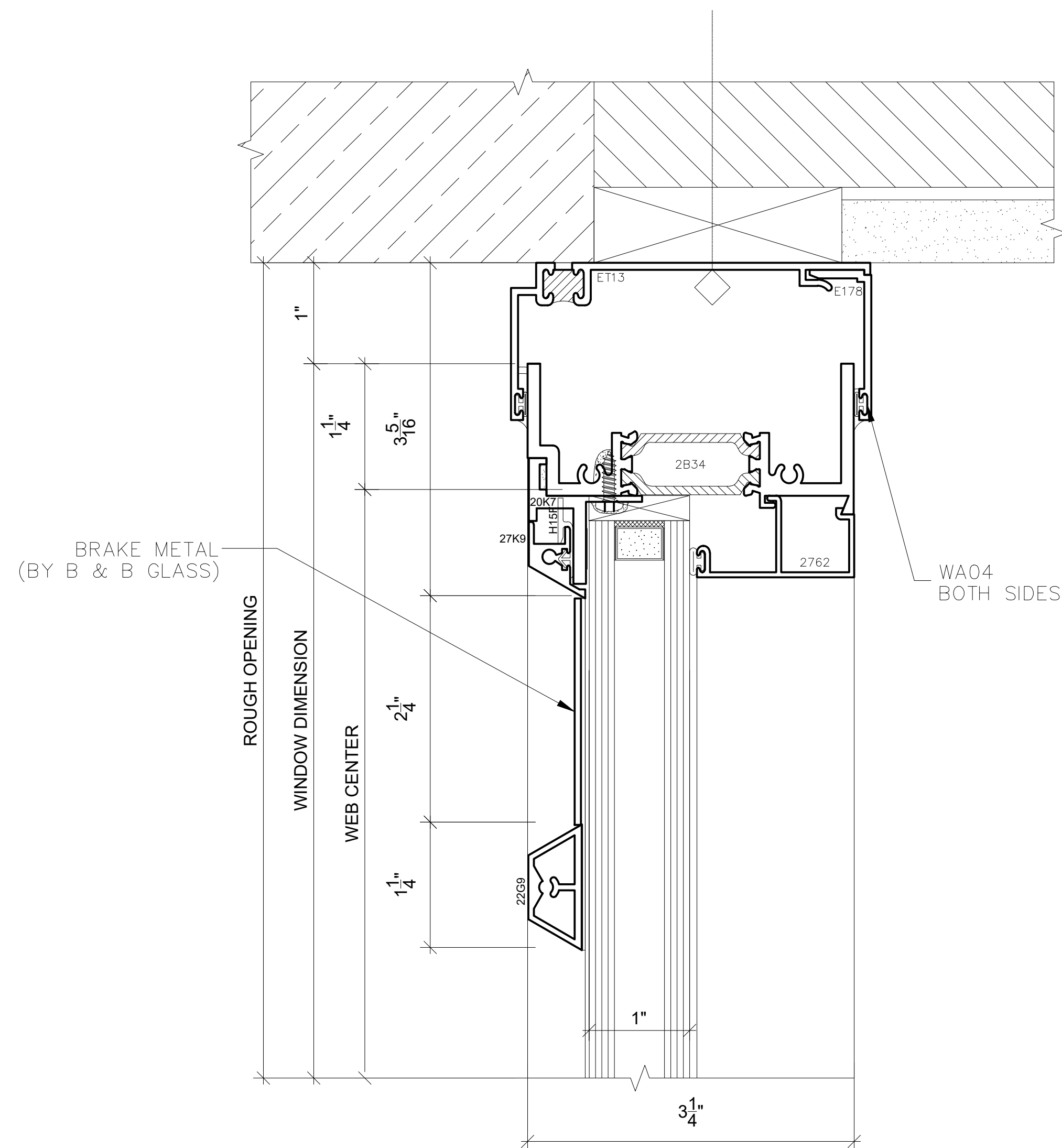
DETAIL 01 / 3.4 (Phase 1)

VERT. CUT



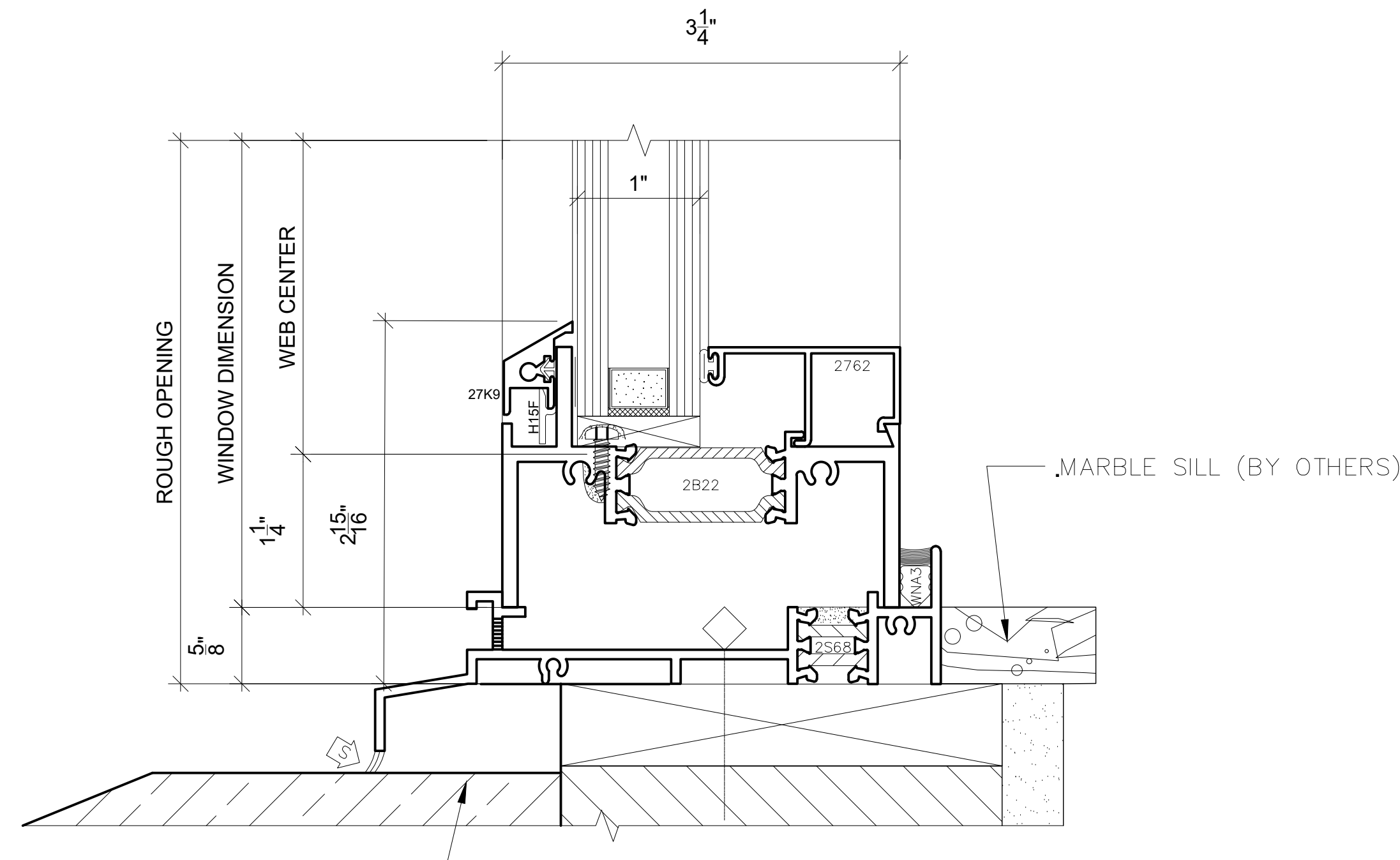
DETAIL 03 / 3.4 (Phase 1)

VERT. CUT



DETAIL 02 / 3.4 (Phase 1)

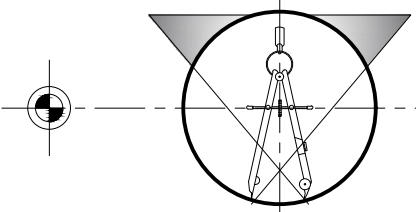
VERT. CUT



DETAIL 04 / 3.4 (Phase 1)

VERT. CUT

ARCH. REF: 1 / WS24



PROJECT:

FYFE BUILDING

10 WEST ADAMS AVENUE
DETROIT, MI 49226

GENERAL NOTES

- 1- ALL DIMENSIONS TO BE VERIFIED IN FIELD.
- 2- ALL ELEVATIONS ARE VIEWED FROM THE OUTSIDE UNLESS OTHERWISE INDICATED ON THE KEY PLAN.
- 3- ALL DOORS ARE VIEWED FROM THE PULL SIDE UNLESS OTHERWISE INDICATED ON THE KEY PLAN.

DISCLAIMER

THESE SHOP DRAWINGS ARE AN INTERPRETATION OF THE CONTRACT DOCUMENTS. IT SHALL BE THE RESPONSIBILITY OF THE GENERAL CONTRACTOR / CONSTRUCTION MANAGER AND THE ARCHITECT TO REVIEW THESE DRAWINGS FOR COMPLIANCE WITH THE DESIGN INTENT AND CONTRACT DOCUMENTS. WHEN THESE DRAWINGS ARE RETURNED WITH "APPROVED", "APPROVED AS NOTED", OR "REVIEWED" STAMPED ON THEM, IT SHALL CONSTITUTE THE GENERAL CONTRACTOR / CONSTRUCTION MANAGER AND THE ARCHITECT AGREEMENT THAT THE SHOP DRAWINGS DO COMPLY WITH THE DESIGN INTENT AND THE CONTRACT DOCUMENTS AS NOTED WITH IN.

WHEN COPIES OF THESE SHOP DRAWINGS ARE GIVEN TO OTHER TRADES FOR COORDINATION PURPOSES, THOSE TRADES HAVE TO BE AWARE THAT ALL DIMENSIONS ON THE SHOP DRAWINGS ARE SUBJECT FOR FIELD VERIFICATION.

SHEET DESCRIPTION:

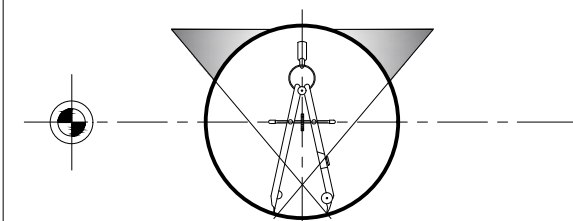
DETAILS

DRAWING DATES RECORD

SCP # 18-106	
ISSUED:	11-05-2018
UPDATE:	12-13-2018
UPDATE:	01-18-2019

SCALE: FULL

SHEET #: **3.4**



PROJECT:

FYFE BUILDING

10 WEST ADAMS AVENUE
DETROIT, MI 49226

GENERAL NOTES

- 1- ALL DIMENSIONS TO BE VERIFIED IN FIELD.
- 2- ALL ELEVATIONS ARE VIEWED FROM THE OUTSIDE UNLESS OTHERWISE INDICATED ON THE KEY PLAN.
- 3- ALL DOORS ARE VIEWED FROM THE FULL SIDE UNLESS OTHERWISE INDICATED ON THE KEY PLAN.

DISCLAIMER

THESE SHOP DRAWINGS ARE AN INTERPRETATION OF THE CONTRACT DOCUMENTS. IT SHALL BE THE RESPONSIBILITY OF THE GENERAL CONTRACTOR / CONSTRUCTION MANAGER AND THE ARCHITECT TO REVIEW THESE DRAWINGS FOR COMPLIANCE WITH THE DESIGN INTENT AND CONTRACT DOCUMENTS. WHEN THESE DRAWINGS ARE RETURNED WITH "APPROVED", "APPROVED AS NOTED", OR "REVIEWED" STAMPED ON THEM, IT SHALL CONSTITUTE THE GENERAL CONTRACTOR / CONSTRUCTION MANAGER AND THE ARCHITECT AGREEMENT THAT THE SHOP DRAWINGS DO COMPLY WITH THE DESIGN INTENT AND THE CONTRACT DOCUMENTS AS NOTED WITH IN.

WHEN COPIES OF THESE SHOP DRAWINGS ARE GIVEN TO OTHER TRADES FOR COORDINATION PURPOSES, THOSE TRADES HAVE TO BE AWARE THAT ALL DIMENSIONS ON THE SHOP DRAWINGS ARE SUBJECT FOR FIELD VERIFICATION.

SHEET DESCRIPTION:

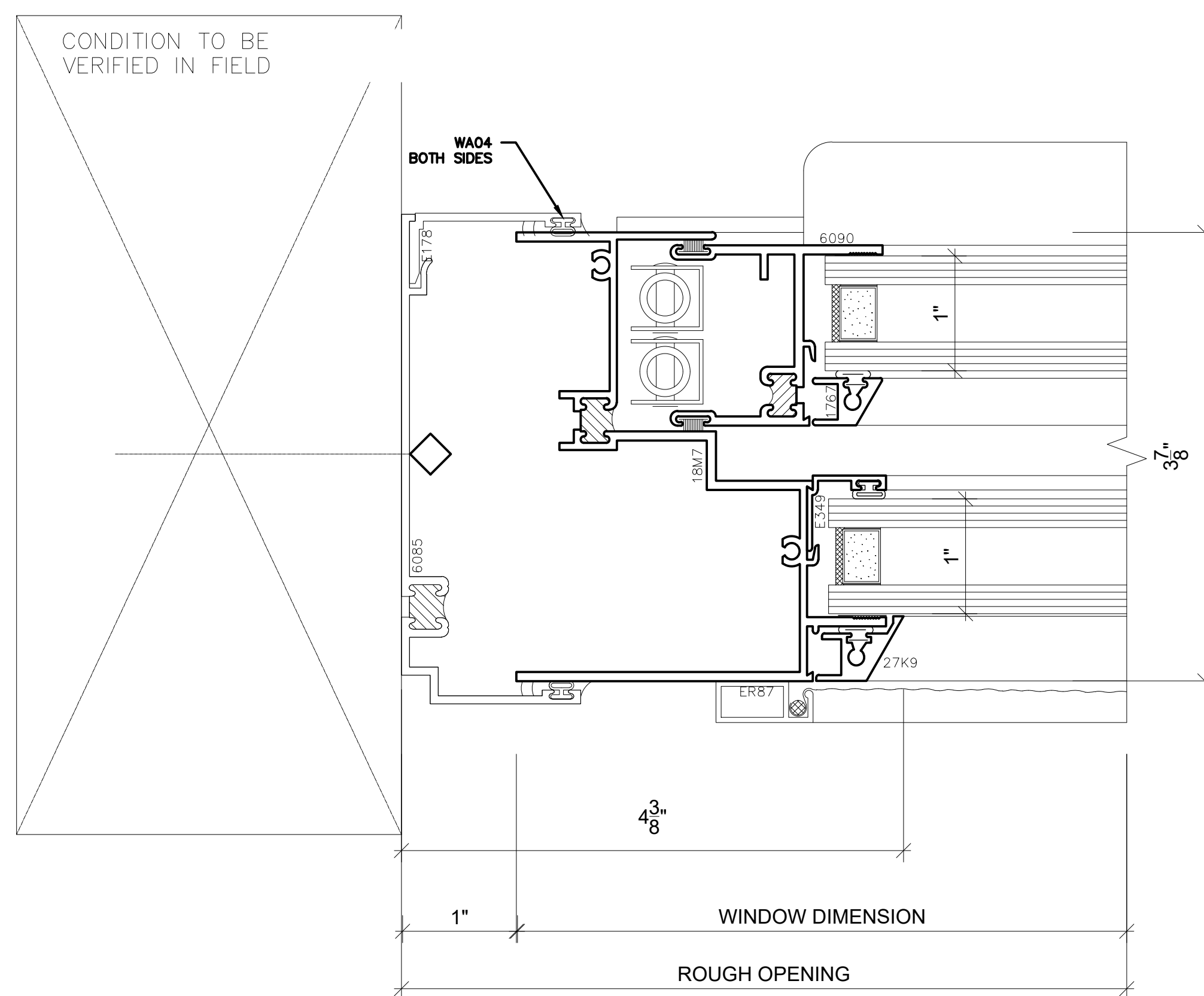
DETAILS

DRAWING DATES RECORD

SCP # 18-106	
ISSUED:	11-05-2018

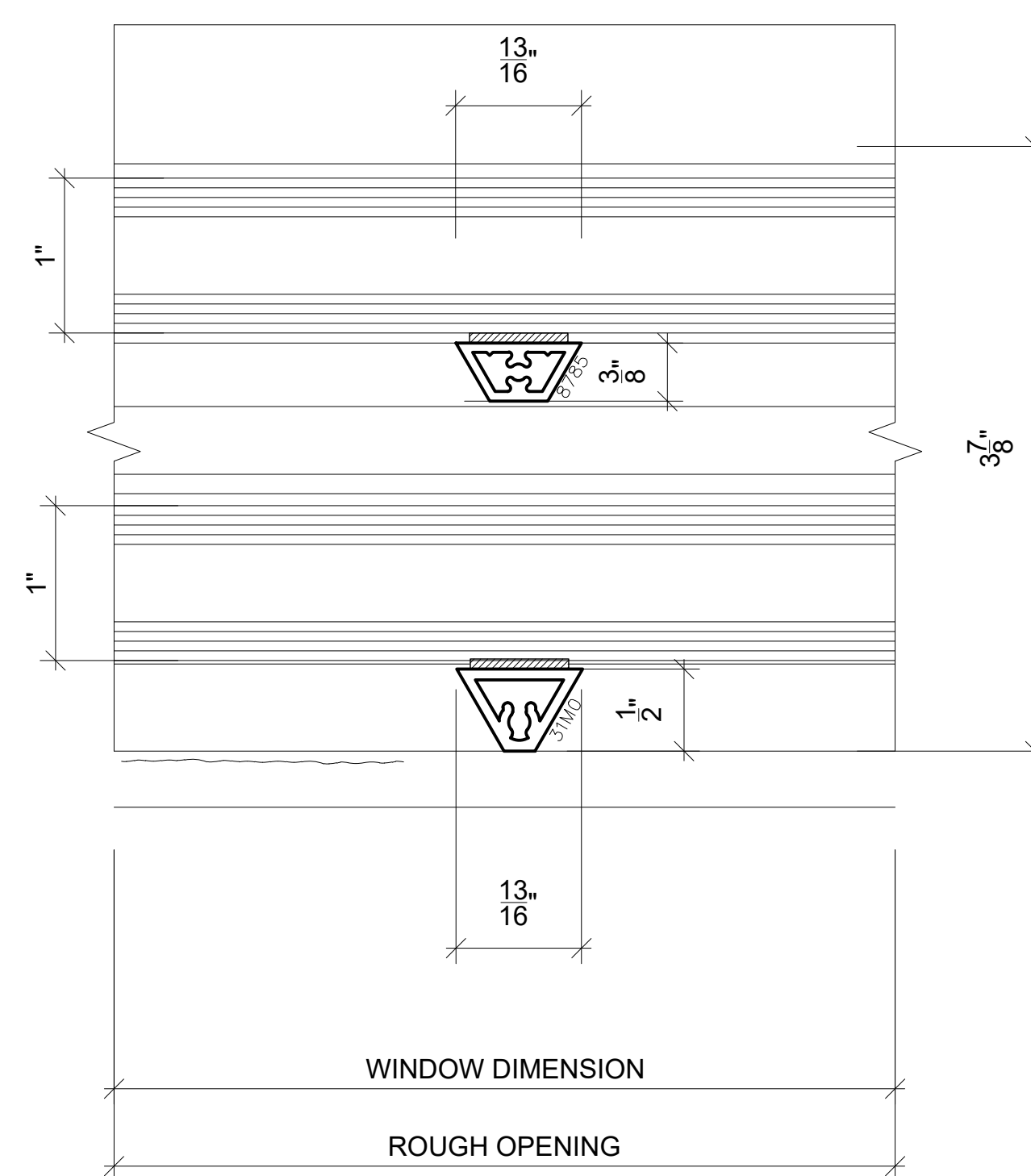
SCALE: FULL

SHEET #: **3.5**



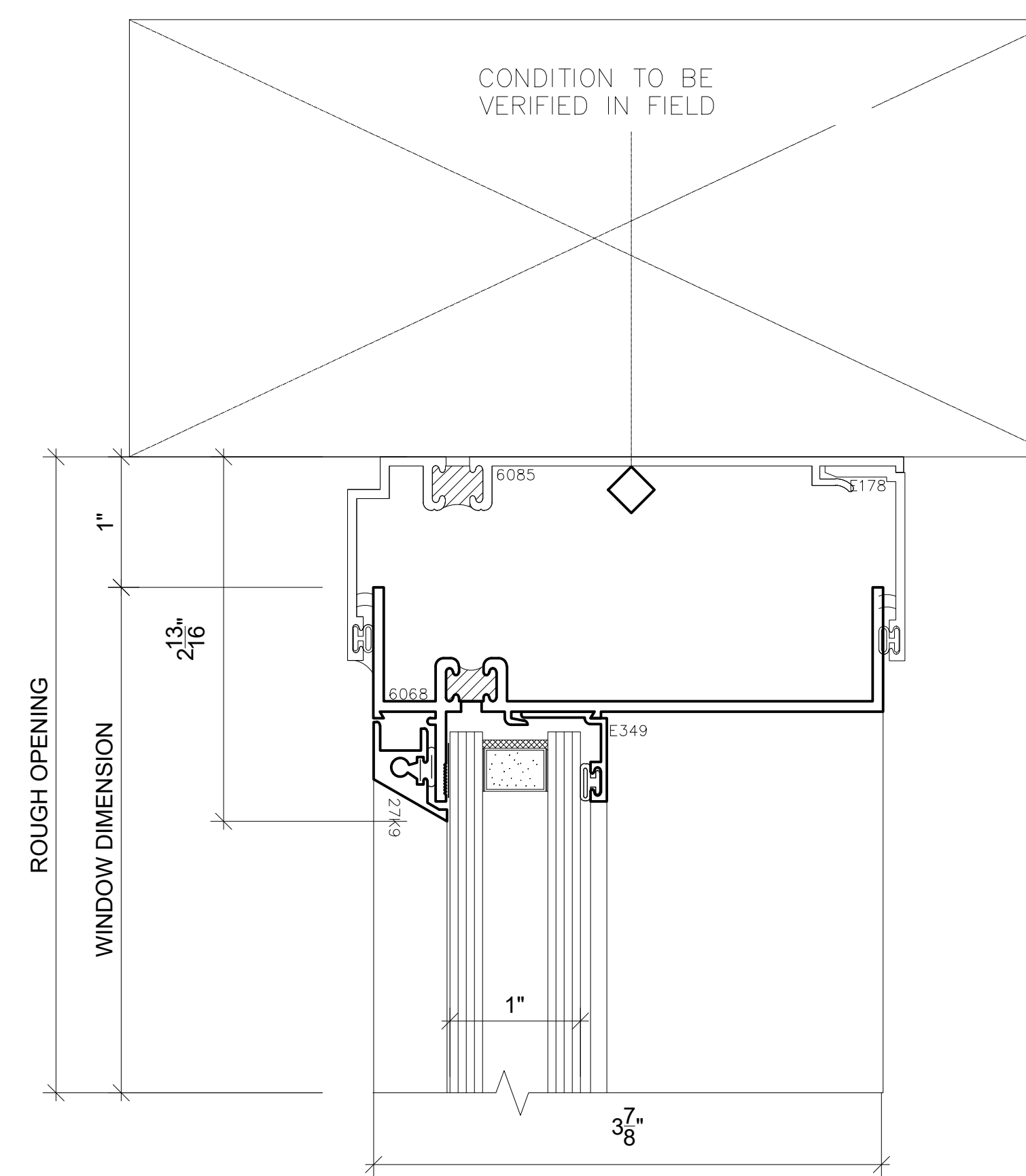
DETAIL 01 / 3.5 (Phase 2)

HORZ. CUT



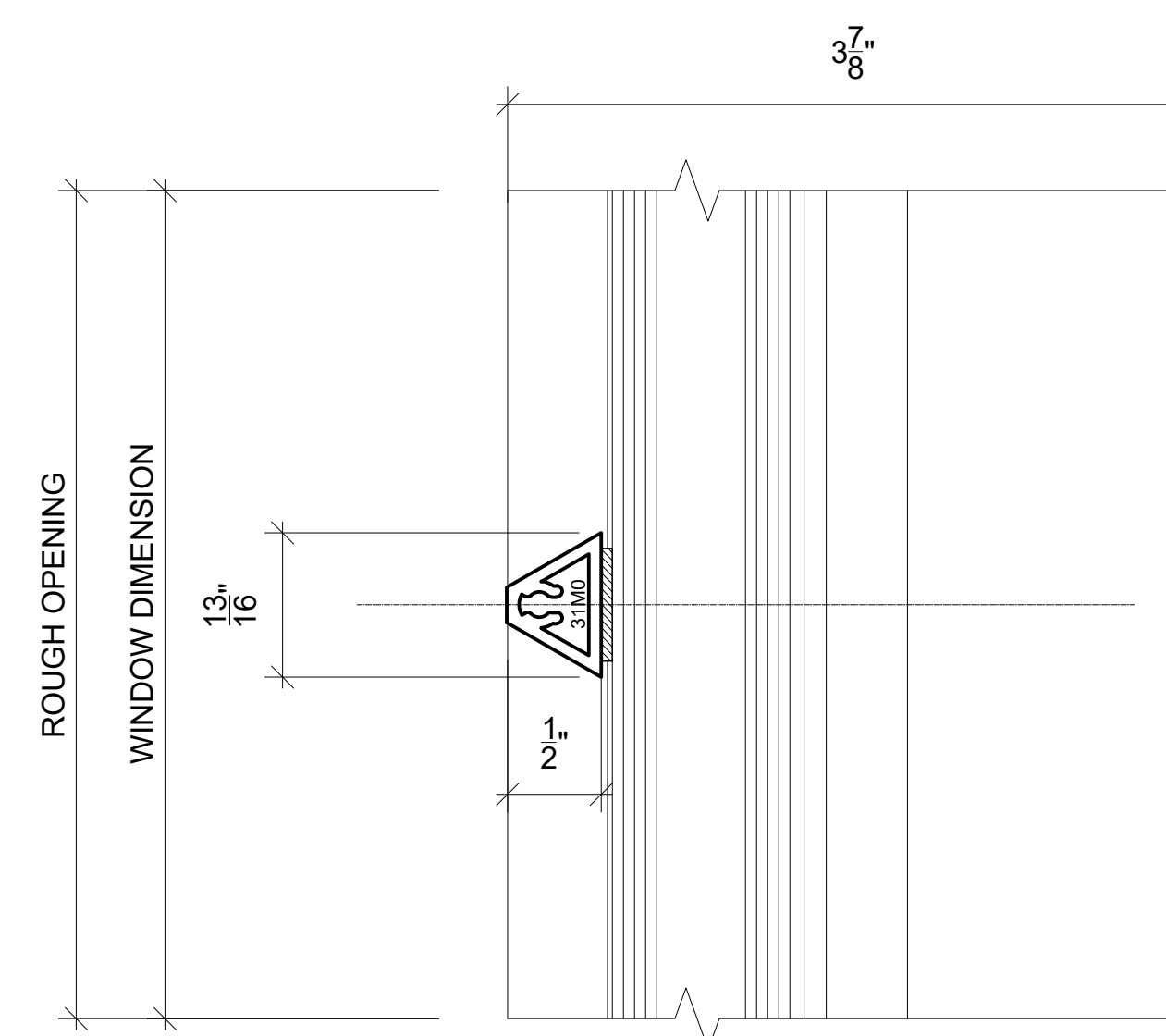
DETAIL 02 / 3.5 (Phase 2)

HORZ. CUT



DETAIL 03 / 3.5 (Phase 2)

VERT. CUT



DETAIL 04 / 3.5 (Phase 2)

VERT. CUT